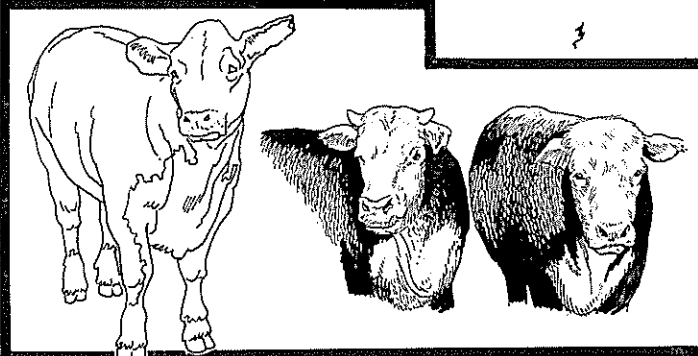
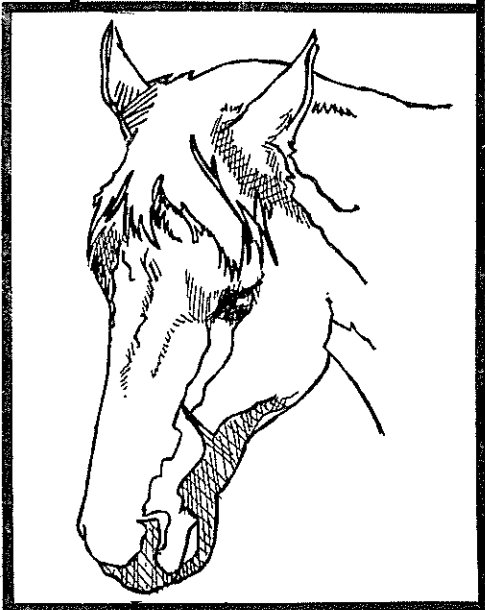
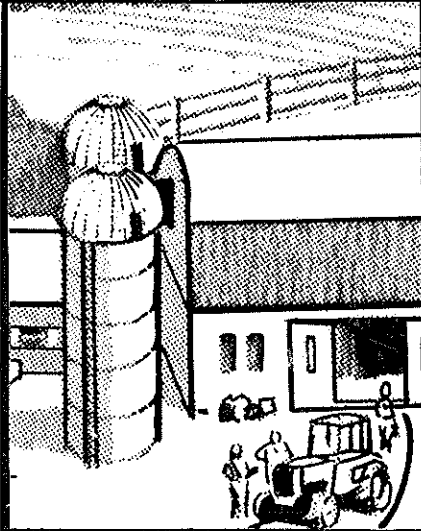
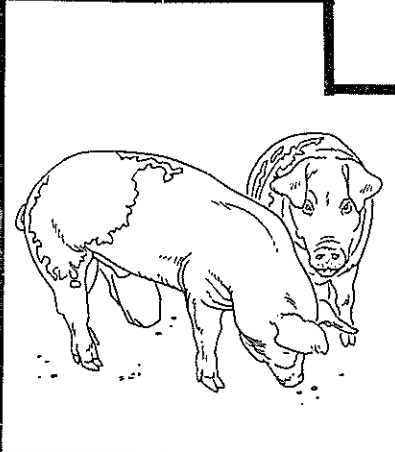
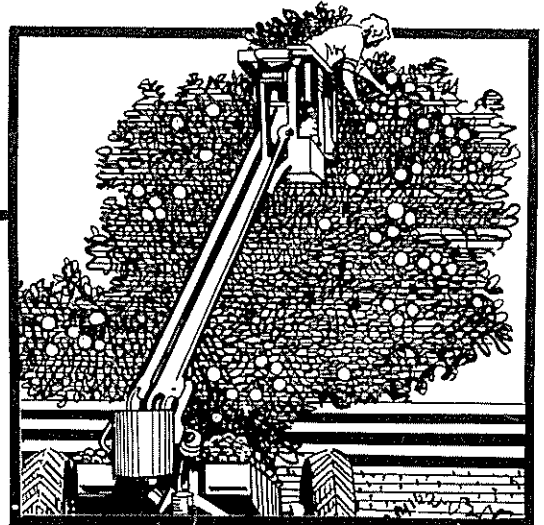
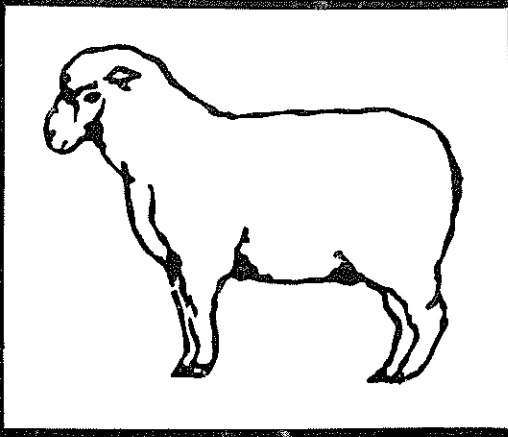


Tandy

\$ 8.95

TRS-80 AGRICULTURAL SOFTWARE SOURCE BOOK



IMPORTANT NOTICE

This Source Book is a compilation of numerous Agricultural application software programs prepared by both professional and amateur programmers for use on TRS-80 microcomputers.

These programs are offered by the author listed and all enquiries and correspondence concerning the programs should be directed to the author at the address shown in the Source Book. All Tandy programs are available through your local Tandy Store, Computer Centre, or participating Dealer.

Since Tandy has neither examined nor tested the programs offered by other persons, firms, or companies, it makes no warranties or recommendations, express or implied, with respect to these non-Tandy programs, including, but not limited to: availability, accuracy, reliability, capacity of software or hardware, performance, hardware requirements, or whether such programs are merchantable and fit for the purposes for which they were intended. Further, Tandy is not responsible for errors occurring in the Source Book listing.

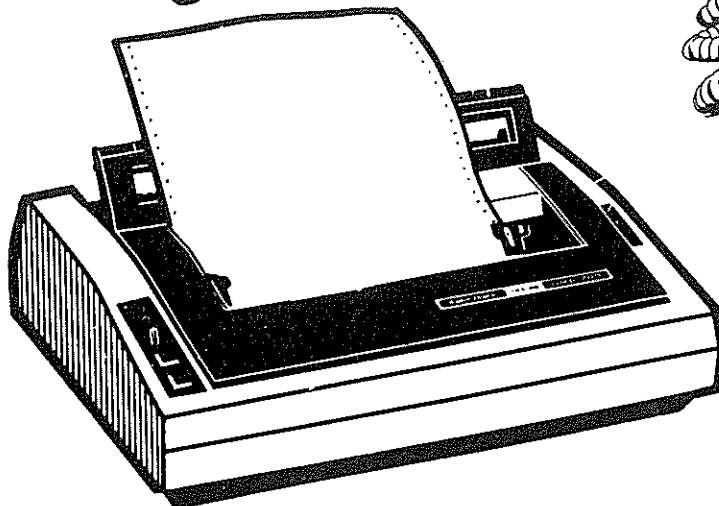
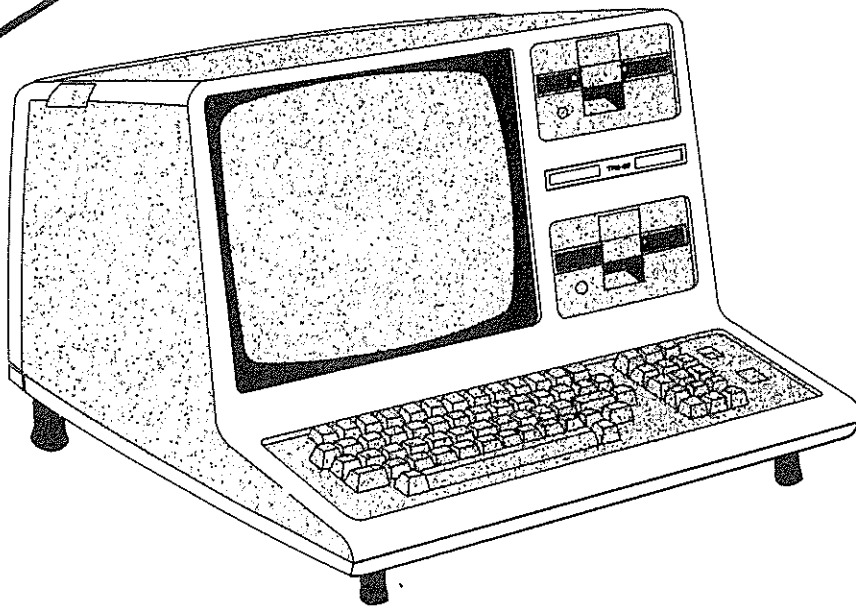
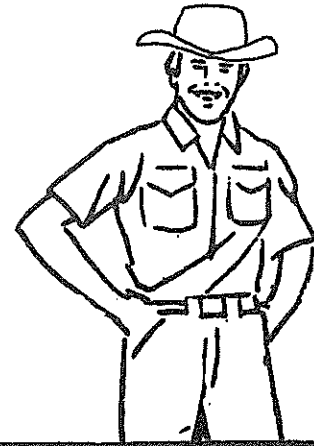
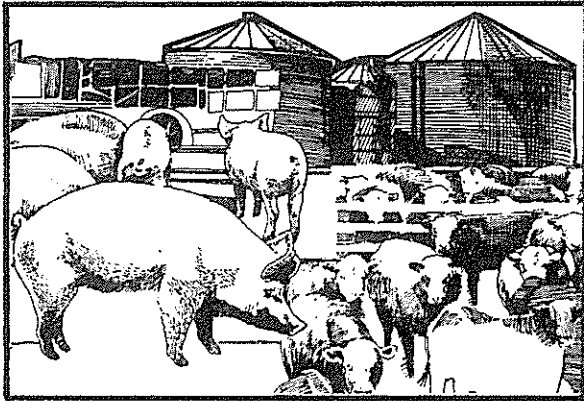
All Tandy programs are offered under Tandy's standard terms and conditions.

TABLE OF CONTENTS

SECTION A - FINANCIAL MANAGEMENT	5
General Ledger	6
Cheque Printer (for General Ledger)	7
Auto Reports (for General Ledger)	8
Payment Lists (for General Ledger)	9
Accounts/Wages	10
Cash Payment and Receipt Journals	11
Australian Payroll System	12
Ag Disk Farm Accounting	13
Finance Manager	14
** FARMMASTER ** Cash Accounting	15
** FARMMASTER ** Cash-Flow Forecasting	16
Financial Recording System	17
Visicalc Enhanced	18
Multiplan	19
Investor	20
 SECTION B - LIVESTOCK	 21
Planfarm Livestock Margins	22
Planfarm Livestock Estimates	23
Stockrec	24
Sheep Gross Margin Analysis	25
** FARMMASTER ** Sheep Management	26
Sheep Manager	27
Sheeprec	28
Beefstud	29
Beefstud Records	30
Ag Disk Feedlot Management	31
Dairy Herd Management	32
Profile III Plus	33
Profile Plus	34
Profile Plus Enhancements	35
Total Analysis Piggery System	36
Poultry Program	37
Poultry Lighting and Feed Restrictions	38
 SECTION C - CROPPING AND IRRIGATION	 39
Cropmar	40
Cropping	41
** FARMMASTER ** Crop Forecasting	42
Ag Disk Crop Management	43
Ag Disk Corn/Soybean Management	44
Fertcom	45
Landforming Manager	46
Contouring and Perspectives Program	47
Compute-a-Grade	48
Compute-a-Ditch	49
Compute-a-Level	50
Compute-a-Sheet	51
Irrigation Landforming	52

SECTION D - HORTICULTURE	53
Orchard Manager	54
Scasop, Scasot & Scos	55
Hortispec	56
Hortibid	57
Urban Tree Evaluation	58
Arbor-Data	59
 SECTION E - MISCELLANEOUS AND ADVERTISING	 61
Vehrecdi	62
Ag Disk Machinery Management	63
SuperSCRIPSIT	64
SCRIPSIT and Utilities	65
Customisation Services	66-72

FINANCIAL MANAGEMENT



OVERVIEW

General Ledger a program which is simple, quick and easy to use. It is a simple double entry accounting system in which you enter the transactions and the computer posts them into the appropriate accounts and produces reports based on your information.

Reports include:

- Trial Balance
- Balance Sheet
- Income and Expense Statement
- Period Transaction Reports in
 - a) Account Number Sequence.
 - b) Entry Number Sequence.
- Posting Summary in
 - a) Document Number Sequence.
 - b) Account Number Sequence.

You are able to define your own Chart of Accounts and assign Account Numbers as well as maintain 6 broad categories of Income and Expenses.

FEATURES

- Very simple to use.
- Comprehensive reports generated.
- Takes about 30 minutes per week for the average farm book-keeping operation.
- Comes with an easy to read, professionally produced manual which includes the program listing.

CAPACITY

- Maximum of 100 Accounts.
- 510 Entries per Posting Session.
- 1830 Entries per Period.

REQUIREMENTS

- Model III/4 with 48K/64K RAM and two disk drives.
- Printer and Cable.

FOR FURTHER INFORMATION CONTACT

26-1552 PRICE
\$149.95

Tandy Stores, Computer Centres, or Dealers

OR

Agricultural Computer Marketing Co-ordinator

91 Kurrajong Avenue

MT DRUITT. NSW. 2770

(02) 675-1222

OVERVIEW

This program merges with Tandy's Model III General Ledger Program. Cheques, butts, and addresses can be printed and transactions posted with one input of data. It uses standard loose leaf cheque forms which you will still use for hand written cheques. The usual plain tractor feed paper is retained in the printer and the left part becomes a "cheque butt", while the right part becomes an address slip. You may need a small pressure roller under your printer window to hold the cheque to the backing paper.

The program uses Profile III Plus to print a list of all addresses of payees and the previous payments to each. The records can be updated or added, or the previous payments checked while the transaction posting is under way. The program counts the cheque number and inserts this into the document name together with a short name and payee record number.

The Session Document Reports are printed in the 132 column printer format on standard 8 inch paper. This OPTIONAL format enables the full details of a cheque with only one expense allocation to be printed in one line, rather than the five lines taken by the standard format.

FEATURES

- Print cheques, cheque butts, address slips, and enter account postings all with one input of data.
- Number reference to obtain payee address, check previous payments, or update and add records during session.
- Condensed Document Sequence Report print formats.
- Australian date formats.
- Suggestions for posting transactions, and instructions.

CAPACITY

- Accounting capacity as for Tandy's Model III General Ledger
- Records of up to 700 payees on a data disc.

REQUIREMENTS

- TRS-80 48K/64K Models III/4 with two disk drives.
- General Ledger.
- Profile III Plus.
- Tandy Line Printer VIII or DMP-200.

FOR FURTHER INFORMATION CONTACT

Stewart Gray,
"FARMAIDE PROGRAMS"
"Swinton",
GLENORCHY. VIC. 3385.

PRICE
\$60.00

OVERVIEW

This program merges with Tandy's Model III General Ledger Program, and provides a facility for nominating a selection of monthly reports, and then you can leave the computer and printer to the job print run. It avoids the tedious responses to menus needed to order each report individually, and date and option prompts that must be responded to while the programs are running.

Up to 9 copies of each report can be pre-selected. A typical monthly report order would be:- 2 copies (one for you, one for your accountant) of each of Trial Balance (A current profit has been included), and Monthly Reports in Document and Account Sequence. One copy for you of Income Statement with Month Closed but year not closed, and a Balance Sheet.

Print formats are improved to show print and closing dates in the Titles, and Issue Dates (Cheque date) for each document. The Monthly Document reports are printed in the 132 column printer format on standard 8 inch paper. This OPTIONAL format enables the full details of a cheque with only one expense allocation to be printed in one line, rather than the five lines taken by the standard format. Since the monthly Document Reports are only for occasional reference by you or your accountant, the enormous saving in bulk of paper is well worth the loss in print size.

FEATURES

- Order all Monthly Reports together for unattended printing
- You save all that time supervising your print runs, a benefit for every Model III General Ledger user.
- Condensed Document and Account Sequence Report Print formats.
- Improved date information and formats.
- Instruction sheets to operate "FARMAIDE" Programs.

CAPACITY

- Accounting capacity as for Tandy's Model III General Ledger.
- Up to 9 copies of each of the 6 reports in one run.

REQUIREMENTS

- TRS-80 48K/64K Model III/4 with two drives.
- TRS-80 Line Printer VIII or DMP-200
- General Ledger

FOR FURTHER INFORMATION CONTACT

PRICE
\$60.00

Stewart Gray,
"FARMAIDE PROGRAMS"
"Swinton",
GLENORCHY. VIC. 3385

OVERVIEW

This program merges with Tandy's Model III General Ledger Program. The first function is to print a list of entries to an account in Account Sequence format. It is useful to print a list of Accounts Payable (cheques) for reconciliation with the bank Statement, but any number of accounts can be pre-programmed for listing, each one any number of times. The Payment Lists are made monthly with the FARMAIDE AUTO REPORTS facility.

The second function is to list payments to disc. This is a powerful tool, but is only likely to be useful in special situations. For example, where two separate business entities exist each with its own General Ledger and one makes payments on behalf of the other the payments entered in the first can be listed to disc, and then transferred to the second General Ledger.

The Document Name, Issue Date, and amount (i.e. Cheque details) are all automatically transferred from the first General Ledger to the second together with the Account allocation of the first business in the second General Ledger. The operator then only has to allocate the total amount between the various accounts. This eliminates all chance of transfer posting errors, and is very quick. The program to post the transactions from the disc list into the second General Ledger is included in the package.

FEATURES

- Lists Cheques on separate sheet for easy reconciliation.
- Lists on separate sheets, payments to any account/s.
- Standard Monthly Account Sequence print format with issue date added, and print and closing date in the title.
- Transfer payments into a second General Ledger by disc.
- Instructions to operate "FARMAIDE" Programs.

CAPACITY

- Accounting capacity as for Tandy's Model III General Ledger.

REQUIREMENTS

- TRS-80 48K/64K Models III/4 with two drives.
- TRS-80 Line Printer VIII or DMP-200.
- General Ledger.

FOR FURTHER INFORMATION CONTACT

PRICE
\$60.00

Stewart Gray,
"FARMMAIDE PROGRAMS"
"Swinton",
GLENORCHY. VIC. 3385

OVERVIEW

These Visicalc Templates are all that you need to complete your account reports. The Templates give a layout, formulas, and format but you need to know how to operate Visicalc so that you can extend or reduce the size to your needs, and insert your own data.

The Templates include Livestock Account for Sheep or Cattle, Depreciation Account for Plant or Buildings with both Fixed Value or Diminishing Value, and a Share List. These are suitable for Taxation Purposes, and together with the General Ledger Income Statement, and Balance Sheet should need little extra work by your accountant, and give you a good estimate of you financial position by the end of your year for any last minute planning.

A full 4 page Administration Accounts Template is included to then prepare accounts using administration values of stock on hand rather than the tax values from the General Ledger. This Template is designed to allocate costs to each enterprise to arrive at a profit for each. It has accounts for Labour, Land, Pasture, Grain, Hay, Crop, Sheep, Cattle, etc., and General Profit & Loss Account. It may take some time to alter this Template to suit your exact needs, but in subsequent years it is only a matter of inserting the new values.

The Wages Sheet calculates Wages from Award Rates, Over Award rates, and weeks worked. Extra Wages can be inserted by Replicating standard lines. Tax is calculated, and all this is printed on a wages slip. The month's wages and tax figures are then transferred to an Annual Tax Summary.

FEATURES

- Includes models to complete your General Ledger accounts year for Tax purposes
- Livestock, Trading Stock, and Administration Accounts.
- Wages sheet calculates wage and Tax, Prints slips, and stores annual wages and tax summary.

CAPACITY

- You can expand accounts to your needs.
- Wages sheet would efficiently handle 15 employees.

REQUIREMENTS

- TRS-80 48K/64K Models III/4 with two drives.
- Visicalc.

FOR FURTHER INFORMATION CONTACT

Stewart Gray,
"FARMAIDE PROGRAMS"
"Swinton",
GLENORCHY. VIC. 3385.

PRICE
\$60.00

OVERVIEW

The DAVIDSON SOFTWARE Cash Payments and Cash Receipts Systems which are marketed by Tandy are simply a computerized version of your daily Cash Books.

These Systems give you up-to-the-minute information as to what you are spending your money on and where your receipts are coming from. Thus you can identify what amount of cash you have available at any point in time.

The Systems produce Columnar Reports of daily payments and receipts that have occurred during the month, plus an Activity Report showing each expense or income's activity for the month and year to date figures.

Both Systems allow you to print receipts or payments for either the month, week, day, or whatever period is meaningful to you. The Cash Receipts System will produce a Bank Deposit Slip, if required.

DAVIDSON SOFTWARE has been designed and written in Australia in accordance with accepted accounting practices. The Systems are extremely "user friendly" so even a first time user can learn to run the Systems quickly and efficiently.

FEATURES

- A single cash receipt or payment can be dissected across a maximum of 20 Headings or Sub-headings.
- The operator can specify whether the receipt/payment was a cheque, cash, bankcard, postal order, bank statement or journal adjustment type transaction.
- All Column Headings and Sub-headings are defined by the user.
- Each receipt or payment can have up to 80 characters of description to fully describe what the transaction was for.

CAPACITY

- For both Systems the operator can set up a maximum of 62 Column headings, each with a maximum of 20 Sub-headings. The headings are not predefined in any way, so the operator can create descriptions that are meaningful to your enterprise.

REQUIREMENTS

- Model II with 64K RAM and either one or two disk drives.
- A CP/M or MP/M Operating System.
- A printer capable of printing 132 characters per line.

FOR FURTHER INFORMATION CONTACT

PRICE
\$699.00

Tandy Stores, Computer Centres or Dealers
OR

Agricultural Computer Marketing Co-ordinator
91 Kurrajong Avenue,
MT DRUITT, NSW. 2770
(02) 675-1222

OVERVIEW

The Payroll system will handle your payroll requirements from payslips to group certificates.

Comprehensive reports are provided: - Payroll Summary Reports - Payslips - Coin Analysis - Cheque Analysis - Bank Deposit Advice - Deduction/Allowance Report - Cost Centre Reports - Monthly and Annual Reports - Group Certificates.

If required the program can be modified to suit your exact needs.

FEATURES

- Caters for hourly or monthly employees.
- Employees are paid by cash, cheque or bank deposit.
- Provides automatic adjustments for deductions and allowances.
- Provides quick, easy and accurate calculation of pays.
- Automatically accrues sick and holiday leave.
- Cost centre reports - a management tool to evaluate profitability by job or area.
- Complete security - System protected by password.
- Prepares Payroll Tax Submission report.
- Prints group certificates.
- Fast flexible access to employees information.
- Self instructing help screens.
- Professionally written and supported.

CAPACITY

- Maximum of 100 employees per one year.

REQUIREMENTS

- Model II/12/16 with 64K RAM and 1 disk drive or Model 4 with 64K RAM and 2 disk drives.
- Printer capable of printing 80 characters per line.

FOR FURTHER INFORMATION CONTACT

PRICE
\$595.00

David Bates and Associates
P. O. Box 49
CARLINGFORD. NSW. 2118
(02) 630-8966

OVERVIEW

This package is a comprehensive farm accounting program produced by Ag Disk and marketed by Radio Shack in the USA.

It handles pertinent transactions of bills (or payables), payments, deposits (or receipts) and adjustments.

Reports include:

- Detailed Trial Balance.
- Income Statement.
- Balance Sheet.
- Period-To-Date Register and
- Accounts Payable.

Six pre-designed account lists include:

1. General Farm.
2. Cash Crop.
3. Cash Crop with Cattle.
4. Cash Crop with Pigs.
5. Ranch and
6. Family.

FEATURES

- Tutorial demonstration.
- Ease of single-entry bookkeeping with the accuracy of double-entry.
- Includes overview of accounting basics.
- Can be used for cash or accrual basis system.
- User controlled accounting period.
- Report headings and sequencing of reports.
- Comprehensive, professionally produced manual.

CAPACITY

Permanent files: 250 accounts, 30 vendors.

Temporary monthly files: 200 transactions (payments), 1150 distributions among accounts, 100 accounts payable, 50 bank deposits, and 75 adjustments to transactions file.

REQUIREMENTS

- Single or twin drive Model III or 4.
- 80 column printer.

FOR FURTHER INFORMATION CONTACT

Agricultural Computer Marketing Coordinator
91 Kurrajong Avenue
MT DRUITT. NSW. 2770
(02) 675-1222

PRICE
\$549.00

OVERVIEW

Finance Manager replaces your cash book. It is an enterprise orientated financial recording system designed for the Australian farmer. It recognises the "difference" between taxation and farm management accounting and re-organises your financial records to provide budgeting, cash flow and enterprise gross margin analysis. From the same records it provides bank reconciliation and unrepresented cheques listing as well as a list of income and disbursements, grouped in your taxation accountant's code numbers and reconciled against your bank statements. This program is ideal for anyone wishing to re-group his business activities and produce a financial summary of his cash flow. Reports generated include:

1. Budget
2. Cash Flow versus Budget.
3. Gross Margin Analysis.
4. Statement of Assets.
5. Profitability Report.
6. Bank Reconciliation.
7. Unrepresented Cheques Listing.

FEATURES

- User designed list of chartered accounts.
- Reselection of enterprises as your farmer activities alter.
- No "double entry" accounting knowledge needed.
- If you keep a cash book, then you can use this system, automatically producing the reports listed.
- Monthly cash flow and budgeting details.

CAPACITY

- Up to 200 accounts, 60 enterprises.
- Monthly total held for each account.
- Cheques and deposits can be broken up to 20 different accounts.

REQUIREMENTS

- Twin disk drive Model III/4 or single drive Model II/12/16.
- Printer and cable.

FOR FURTHER INFORMATION CONTACT

PRICE
\$500.00

Kyabram Computer Services
174 Allan Street,
KYABRAM. VIC. 3620
(058) 522-186

OVERVIEW

The **** FARMMASTER **** Cash Accounting program is a computerised cash-book that assists the farmer in maintaining accurate and up to date records of the farm's current financial position. The Cash Accounting system is designed for use by a person with no previous experience with computers. It is a single-entry book-keeping system - this means only 1 entry into the computer is required for each cash transaction (payment or receipt).

A total of 100 categories of payments and receipts may be kept and these can all be defined by the farmer according to his individual needs. The system holds accounting information for 12 months in periods defined by the farmer (e.g. Jan to Dec., or July to June).

A list of all cheques paid is kept to provide an audit trail for the farmer's accountant.

The program allows the data to be "scrolled" across the computer screen under the farmer's control until the position where the entry is to be made is displayed on the screen.

All **** FARMMASTER **** programs have been designed by Australian farmers and written and tested by professional computer programmers to ensure they are easy to use and that the valuable data they hold is secure.

FEATURES

- 12 months history of financial activity.
- produces printed reports of all detail plus summary of current financial position, plus on-screen summary of current financial position.
- extensive checks of data to minimise errors.
- data can be automatically passed to **** FARMMASTER **** Cash-flow Forecasting program.
- uses standard **** FARMMASTER **** commands and operating procedures
- extensive User Manual, training for new users and 1 year after-sales service.

CAPACITY

- 100 categories of payments/receipts.

REQUIREMENTS

- Model 1 (see Note 1) 48K RAM and 2 disc drives.
- 80 column printer with compressed mode 132 columns.

NOTE 1:- Models III/4 version available early 1984.

FOR FURTHER INFORMATION CONTACT

Computer Systems Development
13 Broughton Avenue
KURRALTA PARK. S.A. 5037.
(08) 297-5419

PRICE
\$245.00

OVERVIEW

The **** FARMMASTER **** Cash-Flow Forecasting program assists the farmer in producing a budget of a future year's operation. The forecast is made in reference to a previous year's records to which the farmer can apply various inflation or deflation rates. Selected entries can be input manually at the farmer's discretion.

Data from the **** FARMMASTER **** - Cash Accounting program is automatically input to the Cash-Flow Forecast program. This data is summed into categories of receipts and payments as defined on the standard budgeting forms provided by most banks. The program then processes this data and a detailed cash-flow forecast plus summary totals can be printed on paper.

An editing facility is then used to scroll the screen over the forecast making adjustments as required. The summary totals may be displayed on the screen when required to check the effect of the changes made, and a printout of the total forecast produced when the farmer is satisfied.

All **** FARMMASTER **** programs have been designed by Australian farmers and written and tested by professional computer programmers to ensure they are easy to use and that the valuable data they hold is secure.

FEATURES

- produces a budget for a future year's operation.
- produces a printed report of cash-flow forecast detail plus screen display of summary totals.
- produces a printout of actual/budget comparison.
- data automatically passed from **** FARMMASTER **** Cash Accounting program.
- uses standard **** FARMMASTER **** commands and operating procedures.
- extensive User Manual, training for new users, 1 year after sales service.

CAPACITY

- up to 100 categories of payments/receipts.

REQUIREMENTS

- Model 1 (See Note 1) 48K RAM and 2 disc drives.
- 80 column printer with compressed mode of 132 columns.

NOTE 1:- Model 3/4 version available early 1984.

FOR FURTHER INFORMATION CONTACT

PRICE
\$245.00

Computer Systems Development
13 Broughton Avenue
KURRALTA PARK. S.A. 5037.
(08) 297-5419

OVERVIEW

The Kellogg Farm Management Unit's Financial Recording System is a menu-driven suite of 17 programs providing a full double entry general ledger system for both farm and non-farm income and expenditure. The Chart of Accounts and degree of detail stored, is user specified permitting accommodation of any combination of family operations. Budgeting and Stock Maintenance options are integrated.

Reporting facilities include:-

1. Budgeting Summary.
2. Monthly Cash Summary & Budget Comparison.
3. Annual Cash Summary.
4. Profit Forecast.
5. Enterprise Gross Margin Statements.
6. Transaction Details by Account.
7. Stock Reconciliation.
8. Account Balances.

FEATURES

- Accommodates full year's transactions avoiding end of month rollovers.
- Farm Management Specific.
- Flexible - user can specify all details.
- User-friendly screens.
- Comprehensive reporting facilities.
- Emphasis on Cash Management.
- Specialist training and installation available.

CAPACITY

- Subject to disk size and memory capacity.
- Up to 9999 Account Codes.
- Up to 99 Enterprises.

REQUIREMENTS

- 64K Model 4 with two disk drives or 64K/80K/128K - Model II/12/16 with one drive.
- 80 Column printer.
- C/PM Plus.

FOR FURTHER INFORMATION CONTACT

Rural Computer Services
283 Wakefield Street
ADELAIDE. S.A. 5000.
(08) 223-3080

PRICE
\$600.00

OVERVIEW

Visicalc is a powerful, flexible electronic Spreadsheet program. It expands the capabilities of a calculator through the powerful memory and electronic screen capabilities of the personal computer to enable you to perform and retain massive calculations and recalculations in seconds.

Visicalc enables you to perform endless "what if" calculations and is an enormous aid to farm decision-makers. The uses to which one can put Visicalc in Agriculture are endless and just a few common uses include Cash Flow Statements and Analysis, Budget Preparation, Gross Margin Analysis, Livestock Break-Evens, Depreciation Schedules, Fertilizer Recommendations, Feed Formulation, Irrigation Schedules, Investment Analysis and many more.

FEATURES

- Automatic or Manual Recalculations.
- Ability to replicate characters and formulae throughout spread sheet.
- Can print all or part of any spreadsheet.
- Ability to automatically format numbers to dollars and cents or to specified decimal places whilst retaining complete accuracy through calculations by formulae.
- Ability to fix titles.
- Can split screens for comparison within sheets.
- Ability to insert rows and/or columns.
- Full documentation in the form of an easy to use, professionally written and produced manual which includes training exercises.
- Ability to move rows and/or columns.
- Ability to edit entries.

CAPACITY

- 63 columns x 254 rows.

REQUIREMENTS

- Models III/4 or Models II/12/16 with one or preferably two disk drives.
- Printer (preferably 132 column) and cable.

FOR FURTHER INFORMATION CONTACT

		PRICE
Tandy Stores, Computer Centres or Dealers OR Agricultural Computer Marketing Co-ordinator 91 Kurrajong Avenue MT DRUITT. NSW. 2770 (02) 675-1222	III	\$269.95
	4	\$349.95
	II/12/16	\$399.95

MULTIPLAN
(26-1530; 26-4530; 26-6430)

64K 2D MODEL 4
64K/80K/128K MODEL II/12/16

OVERVIEW

Multiplan is a new advanced and very easy to use electronic Work Sheet - a large grid made up of your words, figures or formulae. Like other spreadsheets Multiplan has the computer do the calculations for you and retains them for future use or comparison.

The major advancement of Multiplan over its predecessors is its ability to carry formulae or figures from one sheet to others giving it a three-dimensional effect.

FEATURES

- Full simple English menu on the screen.
- Variable widths for each column.
- Ability to replicate or copy names, figures or formulae throughout the sheet.
- Comprehensive Help facilities.
- Ability to include borders and up to 8 windows on each sheet.
- Ability to insert and delete rows and/or columns.
- Expanded formatting capabilities.
- Sorting capability.
- Full documentation in the form of an easy to use, professionally written and produced manual which includes training exercises.

CAPACITY

- 63 columns by 255 rows.

REQUIREMENTS

- Models III/4 or II/12/16 with one or two disc drives.
- Printer and cable.

FOR FURTHER INFORMATION CONTACT

		PRICE
	III/4	\$269.95
Tandy Stores, Computer Centres, or Dealers	II/12	\$329.00
OR	16	\$399.95
Agricultural Computer Marketing Co-ordinator		
91 Kurrajong Avenue		
MT. DRUITT. NSW. 2770		
(02) 675-1222		

OVERVIEW

INVESTOR is a TRS-80 Profile III Plus Template used as an INVESTMENT RECORD.

It provides for the recording of a wide range of investments by groups and records all transactions, calculates the average value of each transaction and present holding. It calculates the annual income from each investment for any dividend rate and the yield for any given market value.

FEATURES

- Easy to follow instructions.
- Gives all relevant data on one screen.
- Will print reports of all investments or for any specific group.
- Immediate updated of your investment position at any time.
- Being a Profile III Plus program, the operator can readily make alterations to the program layout of screens or reports or add new fields; whereas many other similar programs cannot readily be modified.

CAPACITY

- Inexcess of 100 investments.

REQUIREMENTS

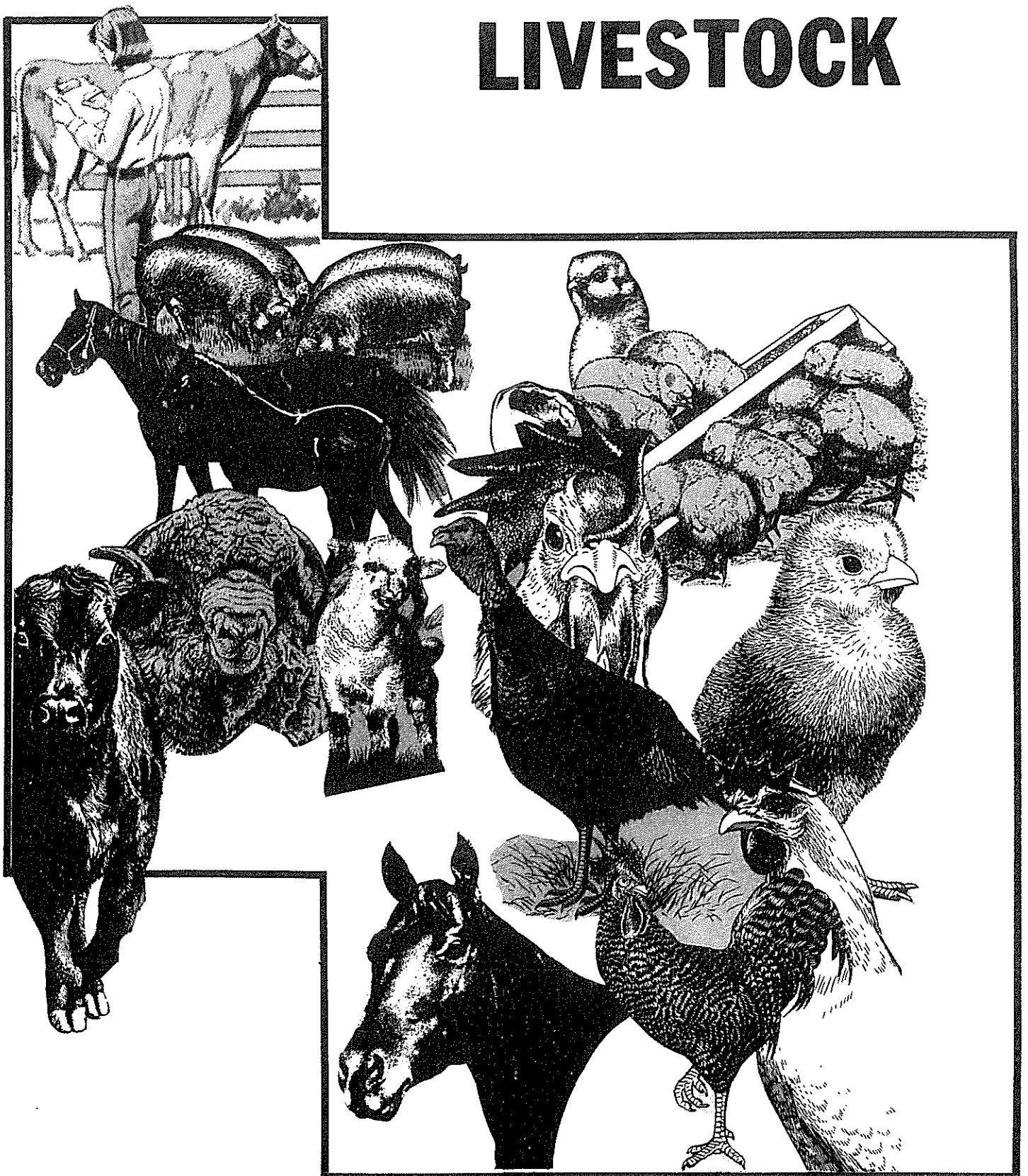
- TRS-80 Model III Or Model 4 with two disc drives.
- Profile III Plus program.

FOR FURTHER INFORMATION CONTACT

PRICE
\$100.00

Onward Pty Ltd
"Pylara"
TARAGO. NSW. 2580
(048) 4921, manual, ask for 58 or 5.

LIVESTOCK



OVERVIEW

The PLANFARM LIVESTOCK MARGINS is a package of six programs which calculates the returns from the respective enterprises on the basis of price, performance and cost factors which the user determines. The programs concerned are as follows:-

SHEEPMAR - which assesses the margin from a self replacing Merino Ewe and Wether Flock selling Wethers as rising 3 y.o.

MERLAM - which assesses the margin from a self replacing "Merino" Ewe Flock selling Wether lambs.

MERFAT - to assess the margins from Merino Ewe Flock mated to Down Rams for Fat Lamb production.

XBREDLAMB - to assess the margins from a Crossbred Ewe Flock.

BEEFMAR - to assess the margins from a Baby Beef Herd.

BIG BEEF - to assess the margins from an export steer producing beef herd.

A few of the basic flock and herd standards are set according to the enterprise concerned, but the user sets the main variables such as:- Flock or Herd size; Lambing/Calving Percentages; Percentage progeny sold ex mother; Values of each class of stock; Sale prices for each class; Wool weights and prices; Stock health, Shearing, Fodder and Interest costs

The program calculates and prints out the capital, income, variable costs and gross margin in total as well as per ewe or per cow, and per Dry Sheep Equivalent.

Once the initial section of the program is completed the user can specify any percentage variation of any of the main inputs and the program then recalculates and shows the revised margin per Dry Sheep Equivalent. There is no limit to the number of alternatives.

FEATURES

- Calculation of Livestock Enterprise margins.
- Comparison of Returns from 6 different livestock enterprises.
- Display of effect of varying individual prices and costs on outcome.

REQUIREMENTS

- 64K RAM and one disk drive.
- Printer capable of 80 characters per line.
- C/PM Plus.

FOR FURTHER INFORMATION CONTACT

Planfarm
Rural Consultants & Valuers
P. O. 264
KALAMUNDA. W.A. 6076.
(09) 293-3296

PRICE
\$200.00

OVERVIEW

A package of three computer programs to facilitate the calculation of production and income from sheep and beef enterprises. The three programs concerned are:

SHEEPEST to calculate the reconciliation and income from a sheep enterprise.
WOOLEST which calculates wool production and returns.
BEEFEST to calculate the reconciliation and income from a cattle enterprise.

The program allows you to specify the classes of livestock to be included and the opening numbers and value of each. There is no limit to the number of divisions which can be made within each group. Thus, it is possible to have Merino and Crossbred Ewes, Spring shorn, Autumn shorn and Trade Wethers etc. Then within each class you have the opportunity to have further classification by age. Once initial classes, numbers and values are entered there is the opportunity to amend these if required. The program gives you the opportunity to specify sales and purchase numbers, price and time for two subdivisions of each class and to specify the losses from each class. Once the livestock activities are entered the user is given the opportunity to review and change these as necessary. Printout can be in either the normal stock reconciliation format or as a prose style report in which it is possible to add comments after each section.

The WOOLEST program provides for up to six shearing times and you are able to specify the classes, numbers and per head weight shorn. After calculating the results the program displays the details of each shearing and gives the opportunity to amend these before going on to estimate the wool income. In doing this the details from each shearing are shown in turn and the user can subdivide the wool from each shearing into as many price grades as is desired and nominate when proceeds will be received. Finally, after circulation of the wool returns these are displayed for any necessary alterations before the opportunity is given to print out the wool estimates report.

FEATURES

- Variable classifications and subdivisions of sheep and cattle on age, shearing breed etc.
- Two sales subdivisions for each class of stock.
- Up to six shearing times.
- No restrictions on classification by number, weights and wool prices for calculation of wool income.

REQUIREMENTS

- 64K Model 4 with two drives or 64K/80K/128K Model II/12/16 with one disk drive.
- Printer capable of 80 characters per line.
- C/PM Plus.

FOR FURTHER INFORMATION CONTACT

Planfarm
Rural Consultants & Valuers
P. O. Box 264
KALAMUNDA. W.A. 6076.
(09) 293-3296

PRICE
\$200.00

OVERVIEW

STOCKREC is a TRS-80 Profile III Plus Template used as a PADDOCK LIVESTOCK RECORD.

It provides for the recording of Livestock by types in each paddock, with provision for number brought forward, purchases, natural increase, sales, slaughter, culls, and dead and missing.

It calculates totals under these headings.

FEATURES

- Easy to follow step by step instructions.
- A sample paddock stock record keeping system.
- Quick reference to details of all stock in any paddock.
- Prints a report by paddocks of all stock.

CAPACITY

- In excess of 100 paddocks.

REQUIREMENTS

- A TRS-80 Model III or Model 4 with two disk drives.
- Profile III Plus.

FOR FURTHER INFORMATION CONTACT

PRICE
\$100.00

Onward Pty Ltd
"Pylara"
TARAGO. NSW. 2580
(048) 4921, manual, ask for 58 or 5.

OVERVIEW

Sheep GM is a spreadsheet (Visicalc) Template developed in the School of Agriculture at Riverina College of Advanced Education which allows users to rapidly determine the gross margins of any type of sheep enterprise and to compare alternate stock policies. The program comes with a half-page easy-to-use guide to its operation.

WHAT IT CAN DO

- Calculates total gross margins and gross margins per ewe, per hectare, per D.S.E. and per dollar invested in stock based on your costs and flock performance figures.
- Shows the sensitivity (parametric) of gross margins to changes in sheep and wool prices and changing costs.
- Develops a stock reconciliation for the flock.

FEATURES

Data entry can be customised to fit your flock structure and operation.

- Sheep can be purchased or sold in any category, i.e. ewes, rams, lambs, wethers, hoggets.
- Individual wool weights are entered for each class of sheep.
- You decide the D.S.E. units to assign to each class of sheep (default values supplied).
- You decide the number of husbandry operations and selling costs (default values supplied).
- You specify the percentage changes which occur in costs and returns in the sensitivity tables (default values supplied).
- Reports containing the financial analysis and stock reconciliation are available on either the screen or a printer.

REQUIREMENTS

- Model III/4 with 48K/64K RAM and 2 disc drives.
- Line Printer if hard copy of reports required.
- Visicalc source program.

FOR FURTHER INFORMATION CONTACT

Dr. D. J. Cottle
School of Agriculture
Riverina College of Advanced Education
P. O. Box 588
WAGGA WAGGA. NSW. 2650.
(069) 232-420

PRICE
\$50.00

Education Institutions POA

OVERVIEW

The **** FARMMASTER **** Sheep Management system is a microcomputer program which provides the farmer with a powerful tool in the management of a sheep wool production enterprise (meat production version available soon). The program has 5 different parts:-

- Flock Details - records details of each animal for culling.
- Wool Clip - records details on each bale of wool clip.
- Print Report - prints partial or full reports, with gross margins on mob or enterprise basis.
- Cull Process - processes flock details and prints a report of animals ranked ready for selection of culls.
- Mob Data - records data on 5 mobs for each of:-
 - flock identification (sex, tag colour, etc).
 - husbandry (dipping, drenching, crutching, etc.)
 - supplementary feeding.
 - fleece statistics (AWTO data etc).
 - sales and purchases (animal movements).
 - lambing details.
 - comments (a notebook on each mob).

All data is input using a simple forms mode process where the farmer fills in a simple form on the screen of the computer.

FEATURES

- provides great assistance in wool production enterprise.
- ranks animals in order suitable for culling.
- records details for up to 5 different mobs.
- provides gross margin figures on mob or enterprise basis.
- uses standard **** FARMMASTER **** commands and operating procedures.
- extensive User Manual, training for new users, 1 year after sales service.

CAPACITY

- up to 5 mobs of sheep.
- up to 500 wool bales.
- up to 500 animals for cull selection.

REQUIREMENTS

- Model 1 (see Note 1) 48K RAM 2 disc drives.
- 80 column printer.

NOTE 1:- Model III/4 version available early 1984.

FOR FURTHER INFORMATION CONTACT

Computer Systems Developement
13 Broughton Avenue
KURRALTA PARK. S.A. 5037.
(08) 297-5419

PRICE
\$345.00

OVERVIEW

Sheep Manager is designed to aid in the objective selection of breeding stock from a flock. The selection process gives weighting for selection of both wool and meat production. The program also adjusts meat and wool weight figures for multiple birth sheep. Having ranked the flock by micron diameter size, body weight, index score 1 and 2, printouts can be obtained showing ewes or rams according to any pre-determined criteria e.g a sorted listing in order of micron diameter size, for all sheep of a given sire and of twin birth.

FEATURES

Information recorded-

1. Tag number.
2. Sire code.
3. Birth status.
4. Greasy fleece weight.
5. Fleece type.
6. Fibre diameter.
7. Yield.
8. Body weight.
9. Condition score.
10. Wool price.
11. Meat value.

Calculations performed-

12. Clean fleece.
13. Index score 1 (wool production).
14. Index score 2 (meat production).
15. Average body weight.
16. Average greasy fleece weight.
17. Body weight correction factor.
18. Greasy fleece weight correction factor.

CAPACITY

- Using a twin disk drive system, 3500 sheep can be maintained.

REQUIREMENTS

- Model III or 4 with twin disk drive.
- 132 column printer.

FOR FURTHER INFORMATION CONTACT

Kyabram Computer Services
174 Allan Street,
KYABRAM. VIC. 3620
(058) 522-186

PRICE
\$500.00

OVERVIEW

SHEEPREC is a TRS-80 Profile III Plus Template used as a STUD SHEEP RECORD for merino or dual purpose sheep. Another version of the program is available for meat sheep.

It records a wide range of information on any animal including identification, whether single, twin or multiple birth; polled, scurred or horned; sire and dam; fibre diameter; greasy fleece weight, yield and clean fleece weight; body weight and provides for the scoring of each animal for any six characteristics selected by the breeder.

It calculates averages and percentage figures related to the group average for fleece weight and body weight and records the classing grade and disposal of each animal.

It prints a consolidated report on the important details of all the animals in a mob (drop) or in any selected group or performance range.

FEATURES

- Easy to follow step by step instructions.
- Full records of any animal on one screen.
- Selection of screens available.
- Performs most calculations automatically.
- High capacity for sorting records on many criteria.

CAPACITY

- Over 600 records.

REQUIREMENTS

- TRS-80 Model III or 4 with two disk drives.
- Profile III Plus program.

FOR FURTHER INFORMATION CONTACT

PRICE
\$150.00

Onward Pty Ltd
"Pylara"
TARAGO. NSW. 2580
(048) 4921, manual, ask for 58 or 5.

* In association with Monaghan Software Pty Ltd.

OVERVIEW

BEEFSTUD is a TRS-80 Profile III Plus Template used as a STUD BEEF CATTLE RECORD. ("BEEFHERD" for herd cattle recording.)

It records a wide range of information on each animal including identification, horned or poss, date of birth, sire, and dam's sire and dam, weaning weight and calculates the weight gain with correction for age of dam and sex of calf. It calculates a percentage weaning weight related to the average of the mob (drop). Similarly it calculates a post weaning weight gain and percentage and records scrotal circumference, grade and disposal.

It provides a selection of print-outs of any animal from the full record of all information to a simpler print of the result of various calculations. It provides for a three generation pedigree of each animal. It will also provide a consolidated report of all the important details of all animals in a drop or for any nominated group or performance range.

FEATURES

- Easy to follow step by step instructions.
- Detailed record of any animal on one screen with alternate screens available.
- A high capacity to sort records for many criteria.

CAPACITY

- Approximately 400 records.

REQUIREMENTS

- TRS-80 Model III or Model 4 with two disc drives.
- Profile III Plus program.

FOR FURTHER INFORMATION CONTACT

PRICE
\$150.00

Onward Pty Ltd
"Pylara"
TARAGO. NSW. 2580
(048) 4921, Manual ask for 58 or 5.

* In association with Monaghan Software Pty Ltd.

OVERVIEW

This comprehensive package (produced by Ag Disk and marketed by Radio Shack in the USA) consists of eight pre-constructed Visicalc templates and provides important information when finishing cattle for sale to packing plants.

The templates include:

1. Cattle Feeder (market decisions).
2. Higher Grade Cattle (hold for choice ?).
3. Steer Marketing (liveweight/hot-carcase-weight bid analysis).
4. Carcase Evaluation (percent cutability/percent lean).
5. Cattle Net Energy (energy potential of ration).
6. MP and UFP (metabolizable protein/urea fermentation potential).
7. Protein Supplement.
8. Ration Formulation.

FEATURES

- Tutorial demonstrations included.
- Formulas can be used as they appear or be customised as needed.
- Data can be stored or saved to disk for re-use or modification.
- Comprehensive, professionally produced manual.

REQUIREMENTS

- Twin drive Model III or 4.
- Printer if printed reports desired.
- Visicalc.

FOR FURTHER INFORMATION CONTACT

Agricultural Computer Marketing Coordinator
91 Kurrajong Avenue
MT DRUITT. NSW. 2770
(02) 675-1222

PRICE
\$99.95

OVERVIEW

As dairy herds increase in size, herd management becomes more difficult. To help in this important area, the Queensland Dairymen's Organisation has developed an on-farm HERd MANagement system (HERMAN). Now, by the press of a button, you can obtain details on any cow in your herd. The following list of the Reproductive and Production Reports gives an indication of the comprehensive details available.

- | | |
|----------------------------|------------------------------|
| - COWS DUE ON HEAT | - COWS DUE TO CALVE |
| - COWS DUE TO DRY OFF | - COWS FOR PREGNANCY TESTING |
| - COWS REQUIRING ATTENTION | - LAST MONTHLY PRODUCTION |
| - HERD INVENTORY | - PERIOD BETWEEN CALVINGS |
| - EXPECTED CALVING PATTERN | - LIFETIME PRODUCTION |
| - CURRENT PRODUCTION | - PROGENY DETAILS |

HERMAN has been designed for easy use and is completely "menu driven". This allows you to be able to update your files and produce your reports with only 30 minutes work per week. A special feature of HERMAN is the ability to customise the software to your own farm situation. In case the reports provided do not meet your exact requirements, HERMAN provides a data base type program which will allow you to create your reports. These reports may contain any selected information held on file and may also be sorted in any specified order.

FEATURES

- Designed for Australian Conditions.
- Full reproductive and production reporting.
- Can be customised to individual farm needs.
- May create your own particular reports.

CAPACITY

- MODEL III herd size of 200 cows.
- MODEL II herd size of 500 cows.

REQUIREMENTS

- MODEL III/4 with 48K/64K RAM, 2 disk drives (TRSDOS 1.3).
- MODEL II/12/16 with 64K RAM (CP/M).
- Printer (80 characters/line).

FOR FURTHER INFORMATION CONTACT**PRICE**
\$500.00

Computer Section
Queensland Dairymen's Organisation
G.P.O. Box 1093
BRISBANE. QLD. 4001

OVERVIEW

Profile III plus is an excellent Data Base Management Program or Electronic Filing System which is ideal for the efficient maintenance of farm records. You can store large amounts of any type of information and retrieve it at the touch of a key. The Data Bases or Templates created by Profile III Plus can be customized to meet your individual needs and with the Maths Operations capability within it you can allow the computer to make all necessary calculations for you. Once your Data Base or Template is created you can still add to it or amend it at any time.

Profile III Plus also provides you with the capability to manipulate your data including sorting and selection for printouts which is particularly important for Stud and Breeding Records. Profile III Plus is currently being successfully used for Beef Dairy, Sheep, Pigs, Poultry, Cropping Orchards, Horse and Goat Operations.

FEATURES

- Permits quick access to individual records or groups of records.
- Up to five different screen and print layouts for each record.
- Ability to print labels.
- Ability to merge with SuperSCRIPSIT to produce form letters or produce reports in any format.
- Ability to create your own menus.
- Allows high speed access through a special index feature.
- Performs addition, subtraction, multiplication and division by simply defining formulae.
- Can be merged with Visicalc for extended mathematical operations.
- Available in hard disk form.
- Full documentation in the form of an easy to use, professionally written and produced manual which includes training exercises.

CAPACITY

- Up to 99 fields in each record.
- Up to 36 search fields (defined by you) in each data base.
- Stores a maximum of 2400 (255 byte) records for a single-segment data base expanded on all drives or approximately 1500 80-byte records for a multi-segment data base expanded on all drives.

REQUIREMENTS

- Model III/4 with 48K/64K RAM and two disk drives.
- Printer and Cable.

FOR FURTHER INFORMATION CONTACT

PRICE
\$299.95

Tandy Stores, Computer Centres or Dealers.

OR

Agricultural Computer Marketing Co-ordinator
91 Kurrajong Avenue
MT DRUITT. NSW. 2770
(02)675.1222

OVERVIEW

Profile Plus is a comprehensive electronic filing system with expanded storage capabilities and enhancements for large or intricate farm operations. Templates for any type of farm operation or any other type of record keeping can either be done by the user or customizing services can do this to your exact requirements.

Once the data is entered Profile Plus enables it to be stored, retrieved, sorted, searched for, selected and printed out according to the requirements of the user.

FEATURES

- Ability to "type-ahead" whilst the computer is performing operations.
- Allows high speed access through a special Index feature.
- Available for Hard Disk.
- Performs addition, subtraction, multiplication and division by simply defining formulae.
- Choice of up to 5 screen formats, print formats and label formats for each record.
- Ability to "password-protect" data.
- User can create his own menus.
- Able to merge with SCRIPSIT for sending of form letters etc. (with an additional disk drive).
- Has enhancements available to greatly expand its capabilities. (See Profile Plus Enhancements).
- Full documentation in the form of an easy to use, professionally written and produced manual which includes training exercises.

CAPACITY

- Up to 99 fields in each record.
- Up to 36 search categories (defined by you) in each data base.
- A maths capability of up to 16 equations of 63 characters.
- Stores from 300 to 20,000 records depending upon the amount of storage capacity available.

REQUIREMENTS

- Model II/12/16 (Model II Mode) with 64K/80K/128K RAM and one or two disk drives or hard disk.
- Printer and Cable.

FOR FURTHER INFORMATION CONTACT

PRICE
\$349.95

Tandy Stores, Computer Centres or Dealer
OR
Agricultural Computer Marketing Co-ordinator
91 Kurrajong Avenue
MT DRUITT. NSW. 2770
(02)675.1222

OVERVIEW

The various enhancements outlined below expand Profile Plus into the most powerful and flexible Data Base Management or Electronic Filing System ever available on a microcomputer.

The system is ideal for the very large and/or very intricate or complex farm recording setups.

PROFILE PROSORT (26-4558)

This enhancement has a high-speed indexing feature that provides expanded sorting and selecting capabilities including sorting on one field with sub-sorts on 4 additional fields ascending or descending. Records can be selected using up to 16 selection criteria.

PROFILE FORMS (26-4556)

This enhancement enables you to print your information in any format on a page and gives you up to five different format selections.

PROFILE ARCHIVE (26-4557)

This enhancement enables you to file inactive records in a separate archive or history file. These records can be recalled or reinstated at any time and while they are archived valuable time is saved through their not being accessed by the computer.

PROFILE LOOKUP (26-4559)

This revolutionary enhancement turns Profile Plus into an automatically cross-referenced system. Amongst other things it effectively raises the upper limit for the number of fields or types of information possible within any file to 450 at a time as up to 5 files can be linked and accessed. This link up can continue indefinitely.

CAPACITY

- Up to 450 fields available for each report.
- Selection by up to 16 selection criteria.
- Sorting on one field and sub-sorting on 4 additional fields.
- Any type of formats for reports with up to 5 types able to be defined by the user.

REQUIREMENTS

- Model II/12/16 (Model II Mode) with 64K/80K/128/ RAM and one or two disk drives or hard disk.
- Printer and Cable.

FOR FURTHER INFORMATION CONTACT

PRICE

Tandy Stores, Computer Centres or Dealers	Prosort \$199.95
OR	Forms \$199.95
Agricultural Computer Marketing Co-ordinator	Archive \$69.95
91 Kurrajong Avenue	Lookup \$269.00
MT DRUITT. NSW. 2770	
(02) 675-1222	

OVERVIEW

Total Analysis Piggery System (T.A.P.S.) was developed for piggeries of 100 to 1500 sows per group. The system was developed over a three year period by the manager of a fully intensive piggery. It provides a complete farm management system and stores all sow and boar records, monitoring all production indices and overall profitability. The system includes a feed analysis program and produces daily work sheets.

FEATURES

- Scan the herd and print out animals records that are weak in an area you choose.
- Analyse your feed and check for correct balance of amino acids, minerals, etc.
- Print detailed histories of boars and sows including return rate, birth weight, wean weight, a variety of reasons for sucker deaths, comparison of performance to herd averages and your own standards, mating and farrowing comments, a summarised analysis and more.
- Give monthly or weekly (depending on the size of your piggery) management reports covering monthly return rates, empty days, all the items above and more.
- Print worksheets telling you which sows are due to mate, preg check, farrow, wean or sell. Also how they are going compared to the mating target both annually and for the current period.
- T.A.P.S. stops you from "losing animals" like that returned sow that was not moved to the boar shed and remained in the dry sow house until discovered when her mates were taken into farrow.
- Check a sow with all her figures updated to see if she is suitable to re-mate.
- Progeny performance testing and the automatic allocation of backfats, daily gains and performance indices back to their respective sire or dam.
- Automatic family line trace for breeding checks.

CAPACITY

- Limit of 1500 sows/group but virtually unlimited numbers of groups per herd.

REQUIREMENTS

- Up to 120 sows - Tandy Model III or 4 twin disk 48K.
- 120-250 - Model II or 12 with one or two drives.
- 250 + - Model III/4 with four drives or hard disk or Model 12.
- 132 Column printer.

FOR FURTHER INFORMATION CONTACT

PRICE
\$700.00

Kyabram Computer Services
174 Allan Street,
KYABRAM. VIC. 3620
(058) 522-186

OR

T.A.P.S. Total Analysis Piggery System
P.O Box 41,
MARNOO. VIC. 3387
(053) 592-291

OVERVIEW

Poultry Manager is designed to track the profitability and production efficiency for each shed for the egg producer. The system allows comparison of conversion rates and percentage lay to the relevant industry standards. Printouts are provided showing profitability for a range of sheds for any given week. Similar reports can be provided for a range of weeks for any given shed.

FEATURES

The program stores per week

1. Egg production.
2. Mortality.
3. Feed used.
4. Sample egg weight by grade.

and calculates

1. Hen housed.
2. Total feed used.
3. % lay.
4. kg feed per dozen eggs.
5. kg feed per kg eggs.
6. Feed per day per bird.
7. Amount earned per week.
8. Amount earned for year to date.

CAPACITY

- up to 20 sheds with a variety of breeds.

REQUIREMENTS

- Model III or 4 twin disk 48K.
- 132 column printer.

FOR FURTHER INFORMATION CONTACT

Kyabram Computer Services
174 Allan Street,
KYABRAM. VIC. 3620
(058) 522-186

PRICE
\$500.00

OVERVIEW

This Pullet Rearing Software was designed primarily to generate "Turn-on" and "Turn-off" times - week by week - for Step-down Lighting, used in conjunction with a Feed Restriction Program, in order to delay sexual maturity of layer pullets, and consequently their onset of lay. It thus saves the onerous and time consuming calculations involved in preparing a Lighting Program for batches of pullets at varying times of the year, as well as giving you a guide as to the quantity of feed to supply in accordance with present feed restrictions techniques.

The feed section of the program is designed to rationalise feeding in a flat deck type Cage Rearing Plant, using a chain Feeder fitted with a simple calibration device. However it also gives actual weights of feed per given number of pullets, depending on the percentage of restriction you wish to apply. The Software allows you to quickly compare different schedules and thus assists you to make the best husbandry decisions for the particular set of circumstances at the time.

FEATURES

- Can be used for either Day-old or Started pullets.
- Can be used as a Step-up Lighting Program if required.
- Prints a 52 week, 15 hour Morning or Evening Lighting Schedule for layers.
- Supplied with the necessary data entered for your general area.
- Lists target body weights for a typical layer strain, for comparison with your own weekly check weights.
- Automatically adjusts for leap year.

CAPACITY

- Gives a schedule of any desired number of weeks up to a maximum of at least 26 weeks.

REQUIREMENTS

- TRS-80 Model III/4 with 48K/64K RAM and 1 disc drive.
- A printer capable of printing 80 characters per line is desirable but not essential.

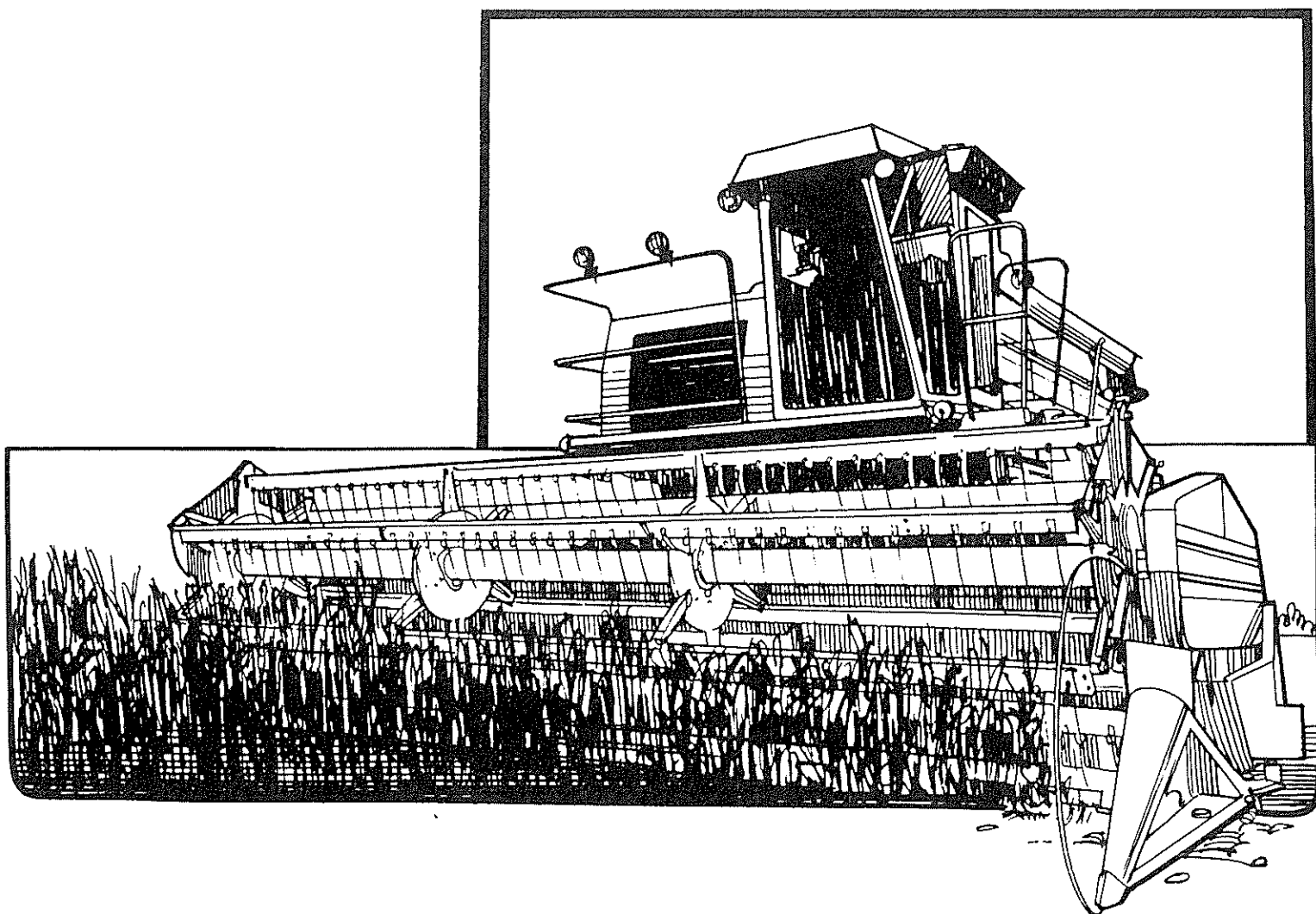
FOR FURTHER INFORMATION CONTACT

PRICE

R. H. Swain
Dafleur Pty Ltd
Waratah Road
MANGROVE MOUNTAIN. NSW. 2250
(043)741-256

\$150.00

CROPPING and IRRIGATION



OVERVIEW

CROPMAR allows you to quickly and easily calculate the returns per hectare from any crop you specify on the basis of yield, price and costs which you determine.

The program first calculates and prints out the gross margin per hectare after allowing for variable costs. As well it shows both average and marginal costs per hectare and the yield required to meet these. It then allows you to specify relevant overhead costs and recalculates the margins after allowing for overheads. The margins are printed for the yield you specify and also for yields 10, 20 and 33% above and below that base yield.

Once the initial section of the program is completed the user is given the opportunity to consider the effect on the margin of varying the various standards used. Any percentage variation can be specified of most of the inputs and the program instantly calculates and prints out the revised margin resulting from the variation. There is no limit to the number of alternatives which may be considered in this section.

The user has complete control over the standards used and is asked to submit figures for all input data.

FEATURES

- Calculates crop gross margins after variable costs.
- Calculates crop gross margins both variable and overhead costs.
- Shows the effect of varying all input factors.
- Allows comparison of the return from different crops.
- Allows comparison of the margin from various techniques.

REQUIREMENTS

- 64K RAM and one disk drive.
- Printer capable of 80 characters per line.
- C/PM Plus.

FOR FURTHER INFORMATION CONTACT

PRICE
\$200.00

Planfarm
Rural Consultants & Valuers
P. O. Box 264,
KALAMUNDA. W.A. 6076.
(09) 293-3296

OVERVIEW

CROPPING is a TRS-80 Profile III Plus Template used as a PADDOCK CROPPING RECORD.

It records for each paddock details and costs and preparation, sowing, seed, fertilizers and chemicals and irrigation costs. It records and calculates harvesting and delivery costs and the eventual disposal of the crop.

It calculates the gross costs and returns and the margin for the crop.

FEATURES

- Easy to follow step by step instructions.
- Great flexibility and capacity for a wide range of cropping enterprises.
- An ability to readily sort records by paddocks, types of crops etc.
- Prints a consolidated record of all paddocks or any type of crop etc.

CAPACITY

- Approximately 100 paddock records.

REQUIREMENTS

- TRS-80 Model III or Model 4 with two disk drives.
- Profile III Plus program.

FOR FURTHER INFORMATION CONTACT

PRICE
\$150.00

Onward Pty Ltd
"Pylara"
TARAGO. NSW. 2580
(048) 4921, (manual) ask for 58 or 5.

* In association with Monaghan Software Pty Ltd.

OVERVIEW

The **** FARMMASTER **** Crop Forecasting system is a microcomputer tool used to assist the farmer in predicting gross margins and break-even yields for any cropping enterprise. Data is supplied to the program in 2 parts:

- data which applies to the whole farm.
- data which applies to an individual paddock.

Total farm data is input to the program using a "forms" mode of operation - the farmer fills in a simple form on the screen of the computer. Individual Paddock data is fed in using the scrolling mode of operation as employed in other **** FARMMASTER **** programs.

Like all **** FARMMASTER **** programs, a "what-if" facility is provided in that data can be changed, and then by giving a simple command, almost immediately by the alteration to the gross margins and break-even yields.

All **** FARMMASTER **** programs have been designed by Australian farmers and written and tested by professional programmers to ensure they are easy to use and that the valuable data they hold is secure.

FEATURES

- produces gross margins and break-even yields for almost any cropping operation.
- produces printed reports of all cropping data and expected results, plus on screen display of gross margins and break-even yields.
- uses standard **** FARMMASTER **** commands and operating procedures.
- extensive User Manual, training for new users, 1 year after sales service.

CAPACITY

- paddocks grouped in modules of 15.
- number of modules limited only by disc capacity.
- up to 5 different crops may be used in 1 paddock module.

REQUIREMENTS

- Model 1 (see Note 1) 48K RAM and 2 disc drives.
- 80 column printer with compressed mode of 132 columns.

NOTE 1:- Model III/4 version available early 1984.

FOR FURTHER INFORMATION CONTACT

Computer Systems Developement
\$294.00
13 Broughton Avenue
KURRALTA PARK. S.A. 5037
(08) 297-5419

PRICE
\$294.00

OVERVIEW

This comprehensive package (produced by Ag Disk and Marketed by Radio Shack in the USA) consists of eleven pre-constructed Visicalc templates and helps with a broad range of crop decisions.

The templates include:

1. Grain marketing (drying/selling/storing alternatives).
2. Grain Yield (bushel/acre: corn, barley, soybeans, wheat, oats, and rye).
3. Corn Yield (field population and reduction due to freezing).
4. Gross margin (alternate crop Vs corn).
5. Hybrid Selection (various varieties of corn).
6. Growing Days (estimated maturity rate and development).
7. Field Calculations (area and population density).
8. Lime Recommendations (PH adjustment).
9. Pivot Application (chemical injection/pivot irrigation system).
10. Fertilizer Needs.
11. Fertilizer Cost (dry Vs dry and ammonia Vs liquid manure).

FEATURES

- Tutorial demonstrations included.
- Formulas can be used as they appear or be customised as needed.
- Data can be stored or saved to disk for re-use or modification.
- Comprehensive, professionally produced manual.

REQUIREMENTS

- Twin drive Model III or 4.
- Printer if printed reports desired.
- Visicalc.

FOR FURTHER INFORMATION CONTACT

Agricultural Computer Marketing Coordinator
91 Kurrajong Avenue
MT DRUITT. NSW. 2770
(02) 675-1222

PRICE
\$99.95

OVERVIEW

This comprehensive package (produced by Ag Disk and marketed by Radio Shack in the USA) consists of six menu-driven smaller programs which deal with corn/soybean management.

The specific aspects covered include:

1. Grain Storage Decisions (which determines the breakeven price at which grain must be sold).
2. Corn Harvest Loss Calculations and
3. Soybean Harvest Loss Calculations (which provide a quick, easy method of checking the efficiency of combine operations for corn or soybean harvest.
4. Crop Yield Calculator (which measures check strip yields for six different crops).
5. Field Population Calculator (which determines the number of plants in one acre calculated from the number of plants in a small field sample).
6. Planter Calibration Calculator (which calculates the planting rate of seeds depending upon the desired population of seed per acre).

FEATURES

- Tutorial demonstrations for each program.
- Ability to print worksheets which makes entering data a simple matter of transferring information from the worksheet onto the entry screen.
- Ease of operation through the use of menus.
- Comprehensive, professionally produced manual.

REQUIREMENTS

- Single or twin drive Model III or 4.
- 80 column printer.

FOR FURTHER INFORMATION CONTACT

Agricultural Computer Marketing Coordinator
91 Kurrajong Avenue
MT DRUITT. NSW. 2770
(02) 675-1222

PRICE
\$149.95

OVERVIEW

FERTCOM allows easy comparison of the on farm costs of various phosphate and nitrogen fertilisers.

Enter the relevant prices and delivery costs for the various fertilisers available and the program calculates the on farm price for each and prints or displays tables to show the comparative costs of each type.

FERTCOM then allows the user to specify fertiliser requirements for a particular crop (e.g. 10 units P and 25 units N) and then displays or prints the feasible alternatives to supply this as shown in the example below. This option can be repeated an unlimited number of times and the program itself allows a re-run with revised prices.

ALTERNATIVES FOR SUPPLYING VARIOUS RATES OF PHOSPHATE AND NITROGEN

(Restricted to your specified range of 90 - 115% nominated rates)
 (\$/ha)
 100 Kg/Ha SUPER + 50 Kg/Ha UREA will cost \$25.11

The acceptable alternatives to this are as follows:-

123 Kg/Ha AGRAS 1 costing	\$25.95
(This will supply approximately 100 SUPER and 47.97 Kg/Ha UREA.)	
88 Kg/Ha AGRAS 2 + 27 Kg/Ha UREA costing a total of	\$25.97
5 Kg/Ha DAP + 32 Kg/Ha UREA costing a total of	\$22.02

FEATURES

- Tables showing on farm prices of all fertilisers.
- Tables showing relative costs of each phosphate, nitrogen and compound fertilisers.
- Alternatives for supplying particular rates of P & N fertilisers and the relative costs.

REQUIREMENTS

- 64K RAM and one disk drive.
- Printer capable of 80 characters per line.
- C/PM Plus.

FOR FURTHER INFORMATION CONTACT

Planfarm
 Rural Consultants & Valuers
 P. O. Box 264
 KALAMUNDA. W.A. 6076.
 (09) 293-3296

PRICE
 \$100.00

OVERVIEW

Landforming Manager calculates the least earth works involved for any given grade over a given survey, for irrigation layout design. It is a true design system, allowing absolute flexibility for the designer/farmer with no built in constraints. Boundary definition is not limited to exact grid points. Irregularly shaped areas can be computed. The system will accept both imperial or metric surveys:

FEATURES

1. Imperial or metric surveys, grids of any size - rectangular or square.
2. Any crossfall grade.
3. Any angle of irrigation to original survey.
4. Any combination of 1, 2, or 3.
5. Any cut/fill or ratio.
6. Terracing.
7. Part area calculation.

The printout shows:

1. Total cuts and fills.
2. Cuts per hectare.
3. Cut/fill ratio.
4. Grade used.
5. Crossfall Grade.
6. Angle used.
7. Depth of cut and fill.
8. Distribution of cut and fill.
9. Area computed.

CAPACITY

- 250 grid points - the bigger the grid used, the larger survey the program will accept. Using the normal 30m x 30m - 40m x 40m grid size, approximately 400 hectares would be the largest survey that would fit. However, since part area computations are available, larger surveys can be broken into sections for ease of use.

REQUIREMENTS

- Single or twin disk drive, Model III or 4.
- 80 Column printer.

FOR FURTHER INFORMATION CONTACT

Kyabram Computer Services
174 Allan Street,
KYABRAM. VIC. 3620
(058) 522-186

PRICE
\$1000.00

OVERVIEW

This program is designed to work with files produced by Landform-Manager. However, it can be used as a stand alone program.

FEATURES

- Contour plans at any contour interval.
- 3 dimensional drawing.
- Longitudinal cross sections.

CAPACITY

- As for Landform-Manager.

REQUIREMENTS

- Single or twin disk drive 48 K Model 3 or 4.
- Plotter printer.

FOR FURTHER INFORMATION CONTACT

Kyabram Computer Services
174 Allan Street,
KYABRAM. VIC. 3620
(058) 522-186

PRICE
\$250.00

OVERVIEW

This program has been written to carry out the repetitive calculations in land forming design in a fraction of the time required to do them manually. At the same time, as much freedom of choice as possible has been left to the designer. The result is a very powerful design tool which will find a place with surveyors, earth moving contractors, and large scale irrigation farmers.

One important aspect of the program is its clarity and simplicity of operation for people with little or no knowledge of computers. The plane of best fit is calculated and then given as a percentage slope parallel to the peg lines or at a specified angle to them. The designer can either use this slope or specify slopes of his own (parallel to the peg lines or at an angle to them). The following calculations are then made:

- Volume of cut and fill.
- Volume cut per unit area.
- Maximum field height.
- Minimum field height.
- Area of field.

FEATURES

- Field may be any shape or any grid size.
- Any cut/fill ratio may be used.
- Earth volumes calculated by summation or 4 point.
- Average haul length can be calculated.
- Extensive printer routines.
- Earth may be spread or borrowed within the field.
- Metric or imperial measure can be used.
- Field height can be specified at a point.
- Machine language subroutines used for speed.

CAPACITY

- 3600 grid points.

REQUIREMENTS

- Model 1 or 3 with at least 1 disk drive and 48K.
- Printer capable of printing at least 80 characters per line.
- Reduced versions available for lesser hardware.

FOR FURTHER INFORMATION CONTACT**PRICE**
\$600.00

I.F.Merrylees
"Coonara"
CARRATHOOL. NSW. 2711
Tel: (011) Carrathool 31

OVERVIEW

The purpose of this program is to carry out the earth volume calculations in the design of Banks, Channels, Drains and Pads. It is a very versatile program and is of enormous benefit to the earthworks designer, taking away all the tedious calculations that these designs involve. Natural surface levels are entered along with the chainage from a fixed point. The points need not be specified depending on what you are designing. For example for channels the following information is required.-

- Width of bed.
- Width of top of bank.
- Height of bank at a point.
- Grade of bed and grade of bank (need not be the same).
- Compaction factor for bank.
- Slope of batters.

After calculation all information is printed in tabulated form showing for each point:-

- Volume above and below natural surface.
- Width of bank at natural surface.
- Width of cut section at natural surface.
- Height and depth of bank and bed.

FEATURES

- Grade of best fit can be calculated.
- Metric or imperial measure.
- Option of automatic balance of dirt.
- Option to pad and bank drains at low spots.
- Tabulated information helps to "mark out" the works on the ground.
- Different sections can be calculated separately.
- Inside and outside batters can be different.

CAPACITY

- 500 points.

REQUIREMENTS

- Model I, III or 4 with at least 1 disk drive and 32K.
- Printer capable of printing at least 80 characters per line.
- Cassette versions available.

FOR FURTHER INFORMATION CONTACT

PRICE
\$300.00

I.F.Merrylees
"Coonara",
CARRATHOOL. NSW. 2711
Tel: (011) Carrathool 31

OVERVIEW

The purpose of this program is to carry out the repetitive calculations in the relating and reducing of staff levels. The program is primarily designed to be used as a "front end" program in conjunction with COMPUTE-A-GRADE and COMPUTE-A-DITCH programs. It can, however, be used as a "stand alone" program for relating blocks of levels and then reducing them.

Staff levels are entered in blocks representing stations or setups. Foresights are required for each station and up to three can be entered for a particular setup. A back sight is also asked for at each station. Foresight and backsight are then used to relate the two blocks.

A bench mark can be entered at any station. After all staff readings are typed in this bench mark is used to reduce the levels.

It is intended that levels should be entered direct from a field note book. With this in mind it is possible to type in the levels in almost any logical order.

FEATURES

- Co-ordinates are given to all levels.
- Graphic representation of the field.
- Metric or imperial measure.
- Field RLs saved to disk for COMPUTE-A-GRADE.
- Single line RLs saved to disk for COMPUTE-A-DITCH.
- Staff levels saved after each setup.
- Map printed.

CAPACITY

- 4000 points.

REQUIREMENTS

- Model I, III or 4 with at least 1 disk drive and 48K.
- Printer capable of printing at least 80 characters per line.

FOR FURTHER INFORMATION CONTACT

PRICE
\$300.00

I.F.Merrylees
"Coonara",
CARRATHOOL. NSW. 2711
Tel: (011) Carrathool 31

OVERVIEW

This program will print custom sheets for surveyors to use to enter staff levels in the field in a map format. Co-ordinates are printed top and bottom and on both sides. The range of co-ordinates can be specified. The positions where the levels are to be placed are shown by dots - these become the decimal points on the finished map. Two different scales can be used - either an 18mm square or an 11mm square. If you use a 9" printer this will give 9 or 16 points per line. A 14" printer will give 16 or 28 points per line. If there are too many points to be printed across the page the balance will be printed on a separate sheet.

FEATURES

- Sheets can be printed to suit the field.
- Individual sheets for each set up.
- Repeat printing of the same sheet.

CAPACITY

- Only limit is no. of points/page - set by printer.

REQUIREMENTS

- Model I, III or 4 with at least 1 disk drive and 32K.
- Printer capable of printing at least 80 characters per line.

FOR FURTHER INFORMATION CONTACT

I.F.Merrylees
"Coonara",
CARRATHOOL. NSW. 2711
Tel: (011) Carrathool 31

PRICE
\$50.00

OVERVIEW

Landforming is a program developed in the School of Agriculture at Riverina College of Advanced Education to allow users to rapidly determine an economical and efficient design for any irrigation landforming project. The program, originally designed for student use, utilises the summation method of earthwork calculations. The program utilises a menu approach to program operations which enables the user to quickly:

- enter survey data.
- verify and modify data.
- file the survey data.
- obtain planes of best fit for all or part of the paddock.
- perform trial designs or to automatically perform a design to achieve a specified cut/fill ratio.
- retrieve data from an existing file.
- file the results of a particular design.

FEATURES

- warnings of violated control heights for the paddock.

CAPACITY

- total of 900 grid points.

REQUIREMENTS

- Model III/4 with 48K/64K RAM and 1 disk drive although two drives are desirable.
- Dot Matrix Printer.

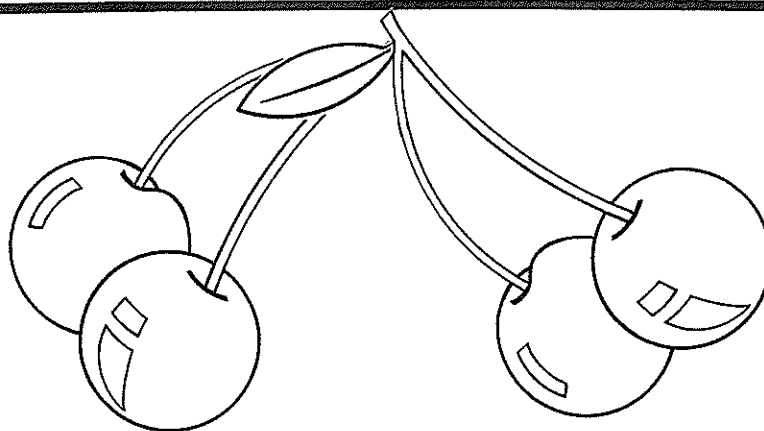
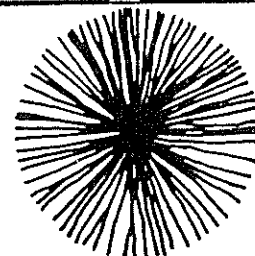
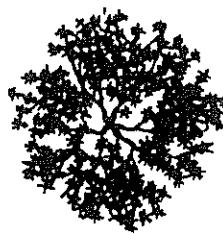
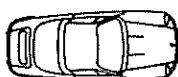
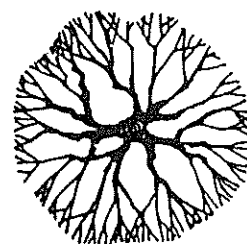
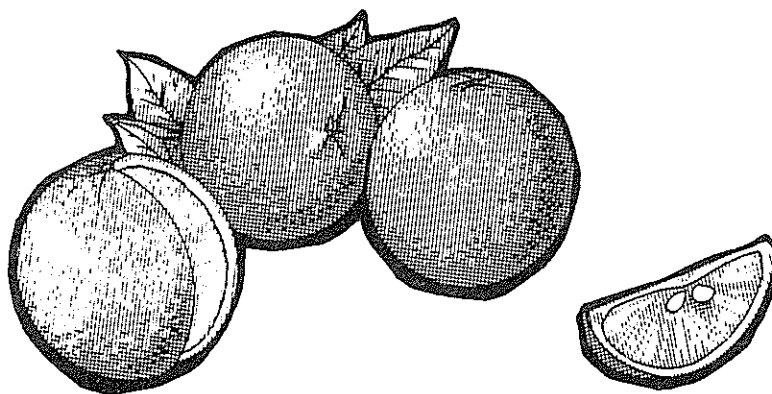
FOR FURTHER INFORMATION CONTACT

PRICE
\$100.00

Mr. M. D. Rebbechi
School of Agriculture
Riverina College of Advanced Education
P. O. Box 588
WAGGA WAGGA. NSW. 2650.
(069) 232-420

Educational Institutions POA

HORTICULTURE



OVERVIEW

Orchard Manager is designed for an orchard or any horticultural enterprise. It keeps track of production figures for any defined area (row or block) as well as for varieties of produce. Various work types can be defined and the total cost of labour, hours worked, and type of work are recorded. All normal payroll documents are prepared including payslips, monthly payroll tax return and group certificates.

FEATURES

1. Payroll.
2. Job costing.
3. Production figures.
4. Records by work type.
5. Records by week.
6. Records by employee.

CAPACITY

- 2000 employees.
- 1000 geographic areas/varieties.
- 200 work types.

REQUIREMENTS

- Model II/12/16 Twin drives.
- 132 Column printer.

FOR FURTHER INFORMATION CONTACT

PRICE
\$2000.00

Kyabram Computer Services
174 Allan Street,
KYABRAM. VIC. 3620
(058) 522-186

OVERVIEW

The SCASOP, SCASOT and SCOS programs undertake the systematic classification and selection of plant (SCASOP), trees (SCASOT) or shrubs (SCOS).

The selection system programmes are in two parts, namely:

1. Selection determination programme
2. Encoded plant data bank

Part 1 permits the operator to specify variables on which the plants are to be selected. Number of input variables according to the module type, ranging over 240 variables divided into a minimum of 24 categories. Any number of categories may be used for any one selection.

The encoded plant data bank is contained in Part 2 of the disk or tape at the time of purchase. The number of plants preclassified varies from 100 to 400. In addition, users can request additional entries applicable to their own use.

Those wishing to classify information, modify headings, edit or manipulate encoded data may purchase the system of SCASOP programmes; these are available on disk only; encoded data can be transferred to tape.

FEATURES

Encoded plant classifications are in modules; modules already released include Eucalyptus, Acacia, and Conifers (trees). Other modules are being prepared for release in 1984.

REQUIREMENTS

Model III/4 16K tape or 48K/64K with one or two disk drives.

FOR FURTHER INFORMATION CONTACT

Michael Brennan and Associates,
P. O. Box 682, ARMIDALE, N.S.W. 2350.

PRICES

Selection System with encoded data	TAPE	DISK
Group A - Large data base	\$99.99	149.99
Group B - Medium data base	\$75.00	\$115.00
Group C - Small data base	\$49.00	\$74.99

SCASOP System without encoded data

3 programmes for classification, selection and edit for disk.
\$550.00

4 programmes for classification, edit, disk/tape data transfer & tape
selection programme \$600.00

OVERVIEW

HORTI-SPEC is a SuperSCRIPSIT™ Template designed to supplement the full range of computerised horticultural programmes by standardising landscape design specifications.

FEATURES

HORTI-SPEC is divided into 20 Sections ranging from General Terms and Conditions, Site Description (sub-heading format) and treatment and care of existing plant material - through to detailed specifications for earthwork, planting, irrigation and maintenance, etc. Appendix A presents a detailed Bill of Quantities, and Appendix B for the preparation of plant lists. The specifications also contain a "Special Instruction and Amendments To Specifications" sheet.

Because of the ease of using SuperSCRIPSIT™, amendments to the specifications are simple to undertake and can be stored for future use.

HORTI-SPEC is designed for use with a DWP-410 daisy wheel printer, utilising true proportional spacing and right justification for professional results; however, if required, the program can be altered for dot matrix printers.

REQUIREMENTS

Model III/4 with one or two disk drives
SuperSCRIPSIT™ for TRS-80 Model III/4
DWP-410 Printer

FOR FURTHER INFORMATION CONTACT

Michael J. Brennan and Associates
P. O. Box 682
ARMIDALE. NSW. 2350

PRICE

\$100.00 (A)

\$200.00 (B)

(A) With minor modifications and personalised initialisation.

(B) Major modifications or extensions to system.

OVERVIEW

HORTIBID is a general purpose programme for preparing Bills of Quantities, specification estimations, and tender submissions.

HORTIBID is designed for use by Councils, Landscape Architects and Consultants, Landscape Contractors, Builders and Nurserymen.

FEATURES

Programme capacity is 200 items classified by:
Reference number;
Product description;
Unit quantity;
Unit costs;
Bills of quantity;
Maintenance unit costs;
Maintenance period;
Estimated maintenance costs;
Total construction estimate and
Ratio of construction estimates to maintenance costs
Comparative analysis of estimated and actual expenditures

This programme calculates total contract price, contingency sum, total maintenance price, profit margin and Commonwealth Withholding Tax.

These totals are printed in a tender document format also containing:-

Name of Tenderer;
Project identification;
Name of firm calling Tender.

Additional information such as the validity period of the tender price, expected commencement date, etc. may also be added if required.

In addition to the above estimation features, HORTIBID's file management facilities include:

1. Load Quote;
2. Save Quote Data;
3. Input Quote Data;
4. Review Quotes;
5. Printout Quote;
6. Edit Unit Cost Data;
7. Printer Internal Data Information;
8. Quote Header Information.

REQUIREMENTS

Model III/4 with one or two disk drives.

FOR FURTHER INFORMATION CONTACT

Michael J. Brennan and Associates
P. O. Box 682
ARMIDALE. N.S.W. 2350.

PRICE
\$375.00

OVERVIEW

Increasing interest in the urban environment, conflicts between environmental and development requirements, and the need to optimise scarce natural resources, lead to the development of a sound and legally acceptable method of evaluation for urban trees. Accordingly, a manual method for assessing the monetary value of trees used in amenity horticulture was developed by the Australian Institute of Horticulture in 1977.

TREEVAL software is based on the Horticultural Institute's methodology, but with the use of computerised systems major improvements have been incorporated; the user undertakes a series of simple measurements, and assessments on a prepared formatted document supplied with the program, enters the input using menu driven instructions, and the amenity value of the tree is automatically calculated.

By the use of specially derived statistical techniques data evaluation is undertaken on a series of simple to use percentage scales, whereby reducing the degree of possible human bias. After completion of calculations datum is converted to the same format as the manual method to allow direct comparisons to be made.

The system is disk oriented, fast to use and provides personalised printouts of the results.

FEATURES

TREEVAL is accompanied by an easy to read comprehensive procedures manual explaining how to obtain field data and data entering for computer processing.

The programme is an easy, quick and accurate method of evaluating trees, meeting the needs of professional horticulturalists, arboriculturalists, Councils with Tree Preservation Orders, land developers, nurserymen, real estate valuers, architects, etc.

CAPACITY

Applicable to any type or size of urban tree.

REQUIREMENTS

Model III/4 with one or two disk drives.

FOR FURTHER INFORMATION CONTACT

Michael J. Brennan and Associates
P. O. Box 682
ARMIDALE. NSW. 2350

PRICE
\$350.00

OVERVIEW

ARBOR-DATA is a Visicalc™ Template designed to supplement TREEVAL for the determination of economic analysis of trees or sets of homogeneous trees, within the urban environment.

FEATURES

This system is applicable for all persons associated with urban environmental economic management, including Councils, Landscape Architects, Consultants, Town Planners, etc.

ARBOR-DATA is divided into two sections, data input and computation; the operator enters physical time data for up to 12 operations divided into three major sections, namely "Analysis and Inspection", "Tree Care Operations", and "Tree Removals". The fourth category, "TREEVAL" records the tree evaluation data derived from the "TREEVAL" estimation procedure.

ARBOR-DATA calculates Operating Costs x Activity, Total Costs, Average Cost per tree (or group of trees), Average Total Cost, and Benefit/Cost Ratio based on Total Costs to environmental value.

This software has the capacity for 5 sections, each section containing 20 units, where a unit is defined as a tree or a group of homogeneous trees. Alternatively, 4 sections may be used for field data and the fifth section to provide summaries of sectional data.

REQUIREMENTS

- Model III/4 with one or two disk drives
- Visicalc™ for TRS-80 Model III/4
- TREEVAL programme

FOR FURTHER INFORMATION CONTACT

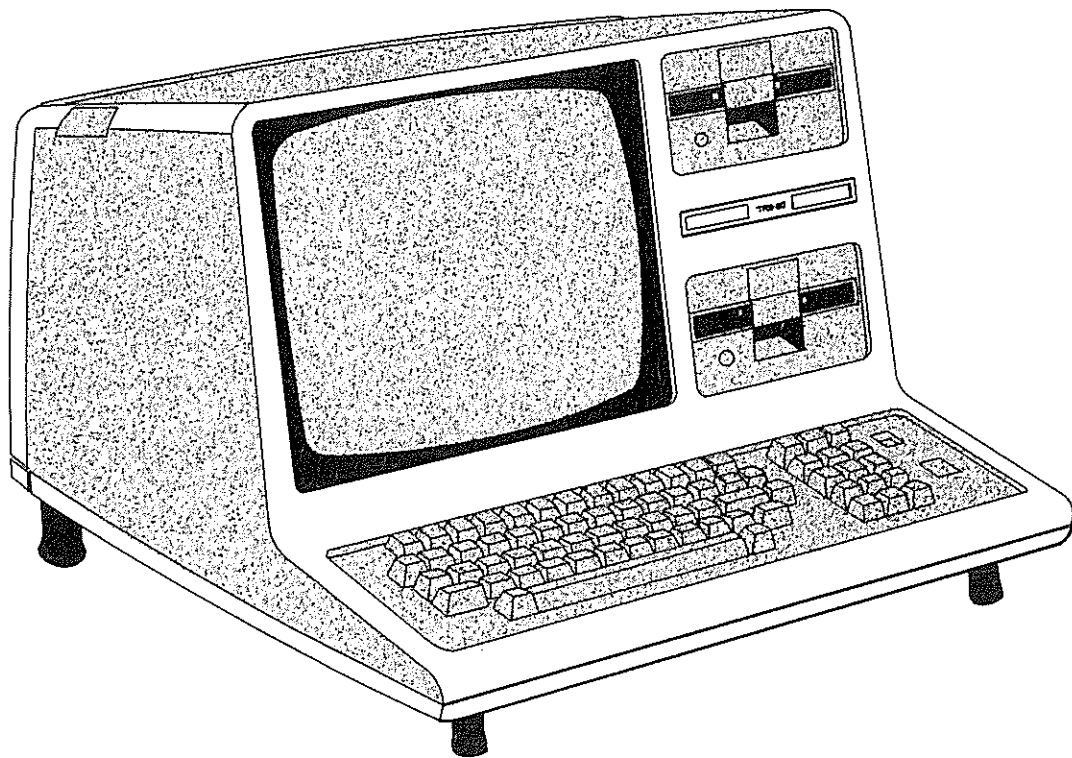
Michael J. Brennan and Associates
P. O. Box 682
ARMIDALE. NSW. 2350

PRICE

\$100.00 (A)
\$200.00 (B)

- (A) With minor modifications and personalised initialisation.
- (B) Major modifications or extensions to system.

MISCELLANEOUS



OVERVIEW

VEHRECDI is a TRS-80 Profile III Plus Template used as a VEHICLE & MACINERY RECORD.

It records details of the vehicle, records and calculates overhead and running costs of vehicles or machines with separate costing of fuels lubricants, repairs and spare parts.

Each unit is separately recorded. In addition, a consolidated report can be printed for all units or units of any nominated type or group.

FEATURES

- Easy to follow step by step instructions.
- Simple entries with flexibility for variations in costs such as fuel etc.
- Records the lifetime costs of any unit to date, either overall or for overheads and running costs separately.

CAPACITY

- In excess of 150 units.

REQUIREMENTS

- A TRS-80 Model III or Model 4 with two disk drives.
- Profile III Plus program.

FOR FURTHER INFORMATION CONTACT

PRICE
\$150.00

Onward Pty Ltd
"Pylara"
TARAGO. NSW. 2580
(048) 4921 manual ask for 58 or 5.

* In association with Monaghan Software Pty Ltd.

OVERVIEW

This comprehensive package (produced by Ag Disk and marketed by Radio Shack in the USA) provides vital information about machinery.

The package consists of four menu-driven smaller programs:

- Operating Cost Estimates (which estimates the cost of owning and operating farm machinery).
- Ownership/Hire Comparison (which aids in deciding between an investment in machinery and the hiring of a custom operator).
- Lease/Buy Comparison (which calculates the present value of the cost of leasing and compares the two values).
- Loan Cost Calculator (which figures farm loan costs using the loan equation).

FEATURES

- Very simple but comprehensive tutorial demonstrations for each program.
- Ability to print worksheets that assist in the gathering of information needed for calculations.
- Ability to print reports showing comparison costs.
- Ease of operation, through the use of menus.
- Comprehensive, professionally produced manual.

REQUIREMENTS

- Single or twin drive Model III or 4.
- 80 column printer.

FOR FURTHER INFORMATION CONTACT

Agricultural Computer Marketing Coordinator
91 Kurrajong Avenue
MT DRUITT. NSW. 2770
(02) 675-1222

PRICE
\$149.95

OVERVIEW

SuperSCRIPSIT is a very advanced and extremely easy to use Word Processing Program. Word Processing is the typing, correcting, formatting and editing of letters or reports on the computer before printing out as many error-free copies of the document as you wish.

FEATURES

- 10 User Keys for storing common words, address or letter endings to save typing of these.
- Ability to move sections of text both within a document and from one document to another.
- Ability to insert or delete text and have the computer automatically adjust the remainder of the document.
- Ability to include Headers and Footers and to Centre text.
- Advanced printing features including underlining (single or double), bold print, super and subscripts and others.
- A Dictionary Program can be added to check spelling.
- Full documentation in the form of an easy to use, professionally written and produced manual which includes training exercises, training tapes and lessons and Reference Manual.

CAPACITY

- Approximately 100 pages per disk.
- Dictionary contains 73,000 commonly used words with option to add 2045 words.

REQUIREMENTS

- Model III/4 with 48K/64K of RAM and two disk drives.
- Printer and cable.

FOR FURTHER INFORMATION CONTACT**PRICE**

Your local Tandy Store, Computer Centre or Dealer	III/4	\$299.95
Agricultural Computer Marketing Co-ordinator		
91 Kurrajong Avenue		
MT DRUITT. NSW. 2770		
(02) 675-1222		

OVERVIEW

The SCRIPSIT Utilities Pack makes SCRIPSIT 2.1 into the most advanced Word Processing system available. Whether or not you are a competent typist this combination makes the most complex farm report a breeze.

FEATURES

- The Column Manipulation Utility lets you manipulate columns of text as well as to find the totals, subtotals and averages of your columns.
- The Boilerplate Utility lets you copy often used paragraphs from a list of standard paragraphs stored in a "boilerplate" document.
- The Communications Utility lets you transmit and receive documents remotely from another Model II Scribes System using telephone lines or an RS-232C Cable and Null Modem Adapter.
- Ability to continue typing and editing while documents are being printed.
- 10 User Keys for storing frequently used words, addresses or letter endings to save typing of these.
- Ability to move sections of text within a document and from one document to another.
- Ability to insert or delete text and have the computer automatically adjust the remainder of the document.
- Ability to include Headers and Footers and to Centre text.
- a Dictionary Program can be added to check spelling.
- Full documentation in the form of an easy to use, professionally written and produced manual which includes training tapes and lessons and a Reference Manual.

CAPACITY

- Depends on storage capacity of system.
- Dictionary contains over 100,000 commonly used words with the option to add up to 2,000 of your own.

REQUIREMENTS

- Model II/12/16 (Model II Mode) with 64K/80K/128K of RAM and one or two disk drives or hard disk.
- SCRIPSIT 2.1 or SCRIPSIT HARD DISK or SCRIPSIT for Thinline Floppy or Hard Disk Use.

FOR FURTHER INFORMATION CONTACT

PRICE

Tandy Stores, Computer Centres, Dealer	II/12	\$499.95
OR	16	\$699.00
Agricultural Computer Marketing Co-ordinator	UTILITIES	\$175.00

91 Kurrajong Avenue
MT DRUITT. NSW. 2770
(02) 675-1222

PERSONALISED FARM PROGRAMS

ONWARD PTY LTD - FARM PROGRAMS

"Pylara",

TARAGO. NSW. 2580.

ph: L. A. Pockley, (048) 4921 Tarago 58

D. J. Pockley, (048) 4921 Tarago 5.

Specialising in the personalisation and adaptation of TRS-80 Profile III Plus and General Ledger programs for farm use.

We have developed and used on our farm a wide range of farm programs which are available for personalisation to your needs.

PROGRAMS AVAILABLE include:

- * GENERAL LEDGER - a program of 100 accounts for farmers.
 - * SHEEPREC - stud sheep record & performance program for, wool, dual purpose or meat sheep.
 - * BEEFSTUD - stud beef cattle record and performance program.
 - * BEEFHERD - commercial beef herd performance recording program.
 - * CROPPING - a paddock cropping record, calculates costs, returns, margins etc.
 - * VEHRECD1 - vehicle and machinery record and costing.
 - * STOCKREC - a paddock stock record.
 - * INVESTOR - a simple but complete record of investments.
-

For further details of the above programs see the Program details section of this Sourcebook or write to us for sample print-outs of any program.

Other programs are available and can be personalised.

We are agents for all Monaghan Software programs and we personalise all Model III & IV programs.

COST

The above programs are personalised to clients and property name with simple step by step instructions. The cost including alterations to Screen or Report layouts but not of Fields is \$150.00.

For major alterations of Fields, a firm price will be supplied promptly on receipt of details of requirements.

Client purchases and supplies a box of discs and these are forwarded with details of his requirements. Program discs (and practice discs where appropriate) will then be prepared and any unused discs returned with the program package.

It is important that the fullest possible details of your requirements as to personalisation and any program variations required are supplied.

CUSTOMISED FARM COMPUTER SOFTWARE

LIVESTOCK COMPUTING SERVICES

David Cottle, BSc(UNSW), PhD(UNE)

Part-time Farm Computer Consultant, 19 Lake Street, Wagga Wagga, NSW. 2650. Phone: (069) 224-501 after hours, February-December.

Lecturer in Animal Production, School of Agriculture, Riverina College of Advanced Education.

Specialist in Animal Breeding, Nutrition and Husbandry.

- * Instructions and disks provided using Profile III Plus for general record keeping, e.g. Farm Paddock Records, Stud Animal Records, etc; or Visicalc for financial recalculations, e.g. Sheep Gross Margins, Checkbook Ledger, etc. The client must purchase the Visicalc System from Tandy.
- * All programs provided customised to the client's requirements. A firm quotation will be promptly supplied on receipt of the client's personal requirements of inputs into the program and desired outputs. Most programs will cost no more than \$200.00
- * Sample printouts of various programs are available on request, so any interested client may determine the potential use of similar programs. Personalised programs, using non-standard software, may also be available subject to negotiation.
- * Back-up advisory service available, if necessary (POA).

CUSTOMISATION OF TANDY SOFTWARE.

INDIVIDUAL CONTRACT PROGRAMMING

Included in this Software Sourcebook are many excellent programmes that will make Agricultural Management less of a chore and will give the man on the land a greater insight into the operation of his business. To gain the maximum benefit from these programmes they must be customised to the individual needs of each farmer. Barry Buck is a programmer with the experience needed to help you with this customisation quickly and efficiently.

Should you require a program specially written for your individual needs or instruction in the use of your computer or software, please contact me for personal attention.

I can also help you with difficulties such as disc data recovery or when programmes are "acting up" or not behaving as they should do.

Please contact:-

Barry Buck Contract Computer Programming,
Baradine Road
BUGALDIE. NSW. 2357
(068)434-433

AUSTRALIAN FARM MANAGEMENT PROGRAMS

All programs custom tailored for your requirements by —

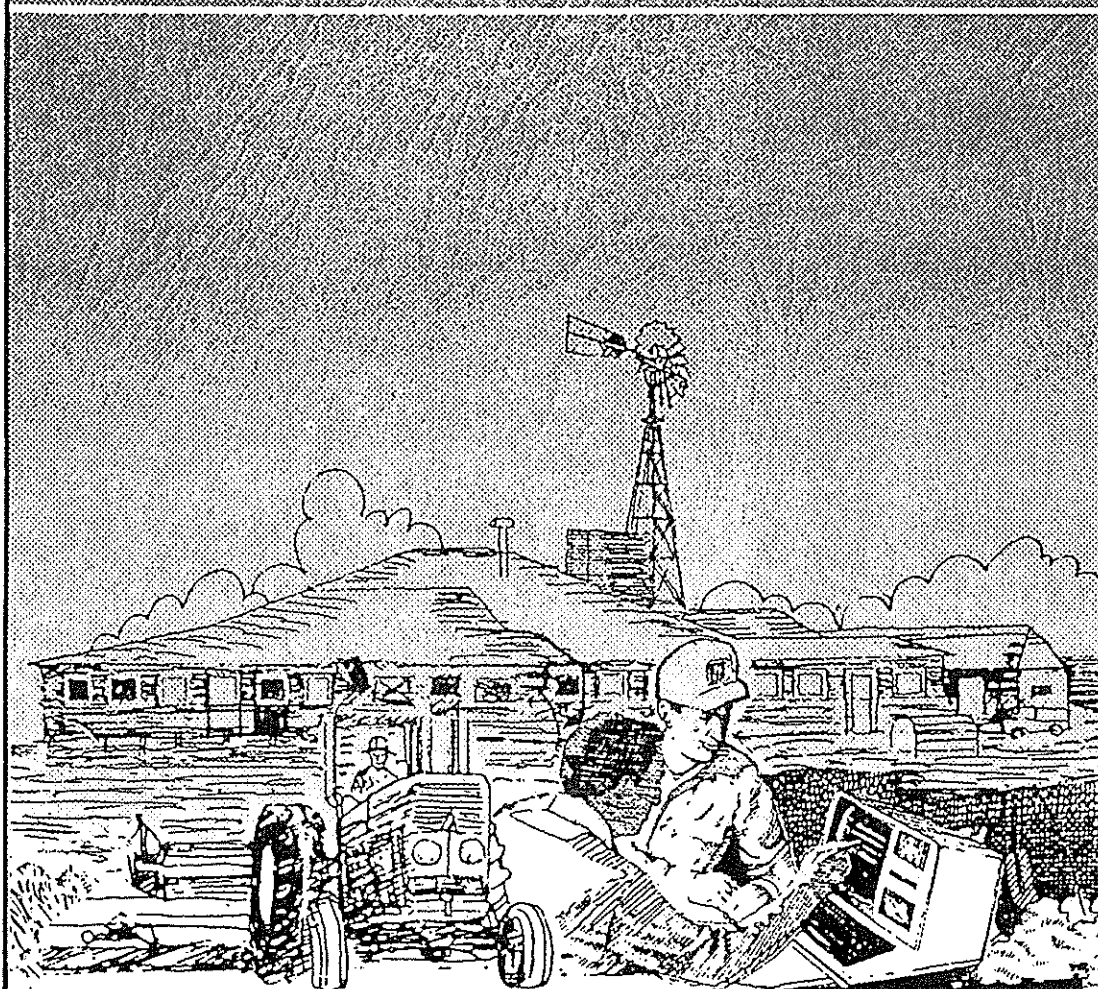
MONAGHAN SOFTWARE

P.J. & C.D. MONAGHAN

Greenwell Point Road, Pyree, N.S.W.

Phone: (044) 47 1314 - (044) 47 1743

Computer Consultant E. J. MONAGHAN - Phone (044) 47 1728



THE AUSTRALIAN FARM MANAGEMENT PROGRAMS

We were one of the first to introduce Microcomputers to farming - about 6 years ago and have since been involved in setting up programs for every type of Rural Industry in every State and New Zealand. Listed below are some of the programs used.

A BROCHURE WITH A QUESTIONNAIRE BOOK WILL BE SENT ON REQUEST. IF REQUIRED, DEMONSTRATION AND INSTRUCTION WILL BE GIVEN ON THE PROPERTY.

FINANCIAL

In most cases Tandy Ledger, Accounts Receivable, Accounts Payable, and Inventory are used. These are tailored to suit each Purchaser, with Practice Disks and Master Disks together with a book of short instructions to get operating immediately.

FROM JANUARY 1984 WE WILL BE ABLE TO OFFER A VARIETY OF FINANCIAL PROGRAMS FROM OTHER SOFTWARE HOUSES AS WELL AS SOME OF OUR OWN, THESE INCLUDE PAYROLL, BUDGETTING, CASHFLOW, A NUMBER OF OTHER PROGRAMS AS WELL AS THE USUAL LEDGER ETC.

NOTE - IT IS ESSENTIAL THAT THE TANDY PROGRAMS BE PURCHASED AT THE SAME TIME AS WE SUPPLY TEMPLATES OR TAILORED PROGRAMS IN ORDER TO COMPLY WITH COPYRIGHT.

The Financial Programs and Graphs are available for any type of enterprise.

The price:

- Tandy's Manual and Disks \$149.95
- Templates, Wall Charts, Instruction Book
and Setting up of Disks \$150.00

The Larger Package Price varies according to the work involved and the price of the Tandy Program.

THE SUPPLY OR PRICE OF THE NECESSARY BLANK DISKS IS NOT INCLUDED IN ANY OF THE PRICES.

BEEFSTUD-BEEFHERD

These templates are available for all breeds including the NEW BREED MANDALONG SPECIALS.

Up to five screens are designed to suit. With all calculations needed to evaluate, compare, grade, rank, and care for the Stud or Herd. Reports are set to suit prospective buyers, veterinarians, and easy evaluation of your Sires, Dams, Progeny in fact you will be able to keep data that you always wanted to but never had the time.

We have just completed the computerisation of the new SIRE, DAM, CALF EVALUATION SCHEME DESIGNED BY MR. R. PISATURO FOR HIS MANDALONG STUDS (Charolais and Mandalong Specials). This program will be available early January 1984. The program will need Model 4, 12, or 16 depending on size of Herd, it will also incorporate the use of the MODEL 100 for use in recording Data in the Yards or Paddocks.

A complete PEDIGREE AND STOCK NUMBERS AND MOVEMENT can be supplied on a separate disk.

All Programs including the Model 4 will have full sort on all fields, FULL PAGE REPORTS (66 lines by 132 columns) again on ALL MODELS, as well as interchange of data from other programs.

Minimum Requirements MODEL 3 48K Disk Drive and Printer
OR ----- MODEL 4 64K 2 Disk Drives and Printer
OR ----- MODEL 12 128K 2 Disk Drives and Printer
OR ----- MODEL 16 512K 2 Disk Drives and Printer
With one of the above --- MODEL 100 24K Modem, Cable, Tape Recorder

The Model 100 can be used in the yards or paddocks instead of a dairy, all data can then be transferred when time is available.
The Commercial Herds PROGRAM AND TEMPLATES will be designed to suit each individual Herd.

DAIRYREC-DAIRYCOM

Very comprehensive and work-proven Templates and Programs with Ledger and Graph.

The Ledger has been in use here for 6 years and the Breeding, Production, and Performance Templates for 3 years with the previous 3 years data used on our own programs included in the new one. Each Cow, Calf, or Bull have 5 screens with the first screen used for General Working data, other screens for Production, Classifier, Sire and Dam.

Reports for Veterinarian, Herd Recorder, Calving Due, Dry Stock, OV Cycle, Times Served, Artificial Insemination, and Performance are printed when needed. The herd is graded on Performance and if required Classification at the same time. Up to 16 pieces of data can be used to grade. The results to be gained from this data will be very obvious to all Dairymen Stud or Commercial.

All Breeds are Catered for in all programs.

Again FULL SORT AND FULL PAGE REPORTS are available to your needs. The Records can be Indexed by Tag Number, Herdbook Number, Sire, Dam or any selected Field.

Minimum Requirements for Hardware same as Beef.

The Model 100 can be used in the yards, dairy, or paddock.

SHEEP

These Templates and Programs are available for all Breeds Stud and/or Commercial. A Stocking screen is included and a DSE Paddock Report will also be included at a small extra charge.

The Data covers as many fields as you need, with the necessary Formulas for Performance, Percentages, Averages, etc to help improve your Flock.

The package can be designed to your needd with any formula, sort, reports,etc that you desire with the added advantage of being able to store and use much more data than ever before.

All hardware as listed above. The Model 100 could be used very easily, in the yards or shed, it is powered by batteries and can store a tremendous amount of information.

CROPS

The Templates and Programs include full Paddock control, soil analysis, irrigation, production, sprays, fertiliser, all costs, stock held, prices received, and previous years results, in fact can be set to record most information required to improve results and make life easier. Again these will be designed to suit your needs. THIS PACKAGE ALSO INCLUDES VEGETABLE AND FLOWER GROWERS. Hardware as above with the Model 100 being used in the field.

SALEYARD

This is a complete control of the selling by Auction with invoices for the Buyers printed immediately after the sale taking just a few minutes. The statements for the seller the same way, commissions, cartage, yardage, levies, charges, total price deductions, cheque amount, cheque number all shown.

A report of all sales is then printed showing all the above together with Totals for each type of animal, averages, total deductions, commissions, in fact all relevant information to control the sale. A financial package is available to combine with the above.

HORTIPAK

This package covers most facets of Orchards, Vinery, Nursery, with Daily Diary, Labour Costs, Block averages, Block totals, Sprays used, Spray costs etc. any records or reports the running of the property and business needs. The financial side is covered by a Ledger and if a business is incorporated with the property a management program can be supplied.

PIGS

A full breeding, Production (Stud or Commercial) Management, Sire/Dam evaluation, Feed costs, Shed control and all the necessary data with formulas needed to manage the day to day running of the business.

HORSES

This package includes Breeding and care of all Breeds, Stallion and Mare Performance and Evaluation Race Results, Prize Money, Jockeys, Trainers, etc. Show results with Placings and Prize Money. Financial Programs and Graphs to suit.

ANGORA AND MOHAIR GOATS-FISHING-TIMBER WITH ASSOCIATE BUSINESS ENTERPRISES TAILORED TO EACH PARTICULAR NEEDS.

PRICES

IN MOST CASES USING THE MODEL III OR 4 AND PRINTER.

Each Program \$150.00

Plus the costs of disks. This includes the setting up of Master and Practice disks for each program, supply of Wall Charts and Disk Cards. Short Instruction Books for easy understanding of the use of the Programs.

For the larger units this will vary according to the work involved but a firm quote will be given in most cases.

This Company also caters for most types of businesses and Contractors. Help and Advice is available by letter or preferably by phone at any time including weekends. Visitors to the farm are most welcome, we have most models being worked on and the use of the programs in the actual workplace is there to see.

For further information please write or phone -

Monaghan Software

"Warrawee"

Greenwell point Rd,

PYREE. NSW. 2540

Phones (044) 47-1314 ; 47-1728 ; 47-1743

Night (044) 47-1728

A BROCHURE WILL BE SENT AND IF REQUIRED PRINTOUTS AND QUESTIONNAIRE.

AGENT BUREAUS - AGENT BUREAUS - AGENT BUREAUS

CENTRAL COAST

Myall River Computing Services (Mrs. K. Smith)

C/- Myall River Past Co.

BULAHDELAH. NSW. 2423 PHONE (049) 97-4530

SOUTHERN HIGHLANDS

Onward Pty Ltd.

"Pylara"

TARAGO. NSW. 2580

PHONES (048) 4921 ask for 58 or 5.

NORTH WEST

Miss Sue Polain

20 Chestnut Avenue

ARMIDALE. NSW. 2350

PHONE (067) 638-7005

VICTORIA

Collins Data Centre

"Graphic Place"

191 Hogan Street

TATAURA. VIC. 3616

PHONE (058) 24-2343

NORTHERN TERRITORY

Mr. Max Stewart

ALICE SPRINGS. NT. 5750

PHONE (089) 52-4526 ; 52-4026

QUEENSLAND

Universal Services

DALBY. QLD. 4405

PHONE (074) 62-3228 ; 62-3726

